



## January - March 2022

### What are in this issue

<i>Our Achievements</i>	<i>pg. 2</i>
<i>Academic Promotions &amp; Appointments</i>	<i>pg. 3</i>
<i>Decision Aid to Support Colorectal Cancer Screening</i>	<i>pg. 4</i>
<i>Events &amp; Happenings (January – March 2022)</i>	<i>pg. 5</i>
<i>Happenings (April – June 2022)</i>	<i>pg. 10</i>



Have something to **SHARE** with your fellow FM ACP faculty in this newsletter?



Winnie Seah  
[winnie.seah.s.g@singhealth.com.sg](mailto:winnie.seah.s.g@singhealth.com.sg)

Eugene Quek  
[eugene.quek.y.t@singhealth.com.sg](mailto:eugene.quek.y.t@singhealth.com.sg)

## Duke-NUS Hall of Master Academic Clinicians 2022

The Duke-NUS Hall of Master Academic Clinicians (MAC) recognizes a selected group of clinicians who have distinguished themselves through clinical mastery, exemplary standards of professionalism and scholarly excellence.

Our Heartiest Congratulations to **Clinical Assoc Prof Tan Ngiap Chuan, Vice Chair, Research, FM ACP**, on being inducted as a Master Academic Clinician at the Hall of Duke-NUS MAC Induction Ceremony 2022.



## CGH Best Educator Award (Prodigy Award) 2021



The CGH Best Educator Award (Prodigy Award) recognizes emerging educators who have demonstrated passion, commitment and initiated or contributed to innovative education initiatives.

Congratulations to **Dr See Qin Yong**, Department of Care and Health Integration, on being awarded the CGH Best Educator Award (Prodigy Award)!

## CGH Improvement Festival Award 2022

### 2021 Department Quality Award, Commendation Award, Clinical Category, CGH

Congratulations to **Dr Christopher Chang**, Department of Care and Health Integration, for being conferred the above awards!



## Academic Appointments with Duke-NUS Medical School

### Clinical Professor

Ng Chirk Jenn

### Clinical Instructor

Chaterji Shera

Chen Ruiting

Ho Han Kwee

Ong Yingxian Natalie

Tan Mui Suan

Tan You Mei Charmaine



Charmaine



Shera



Natalie



Han Kwee



Ruiting



Chirk Jenn



Mui Suan

## Decision Aid to Support Colorectal Cancer Screening

A Decision Aid (DA) to support colorectal cancer screening in Singapore has been developed through a qualitative research study conducted by SingHealth Polyclinics (SHP). The development aimed to tackle the low screening rate of colorectal cancer (CRC) in Singapore due to knowledge deficits of this common cancer and social reasons such as inconvenience and a lack of reminders or recommendations.



“We believe that shared decision making will reduce the gap of low screening rate among average risk profiles in Singapore.

We postulate that a **more person-centred and culturally adopted DA will better serve the patients**, as such [an] approach puts a patient’s lifestyle and concerns into consideration, which would better facilitate patients’ decision-making to undertake CRC screening.

Ultimately, the patient is the recipient of the screening, not the doctor.”

*Clinical Assoc Prof Tan Ngiap Chuan  
Director, Research, SHP  
Vice Chair, Research, FM ACP*

“Besides addressing the concerns of asymptomatic patients of average risk who may face difficulties deciding on a particular screening modality due to the lack of knowledge on various available options, the DA supports the challenges faced by family physicians as well.

Conveying the information of CRC and the importance of screening to patients effectively, requires time and effort. However, **they can now use the DA to facilitate the discussion and decision-making process with the patient.**”

*Dr Julia Yuen (above right)  
Associate Consultant, SHP  
Main author of the study*

The participants generally had favourable perceptions of using the DA. There were also suggestions to digitalise the DA. The team has also adapted the DA into Chinese and Malay languages.

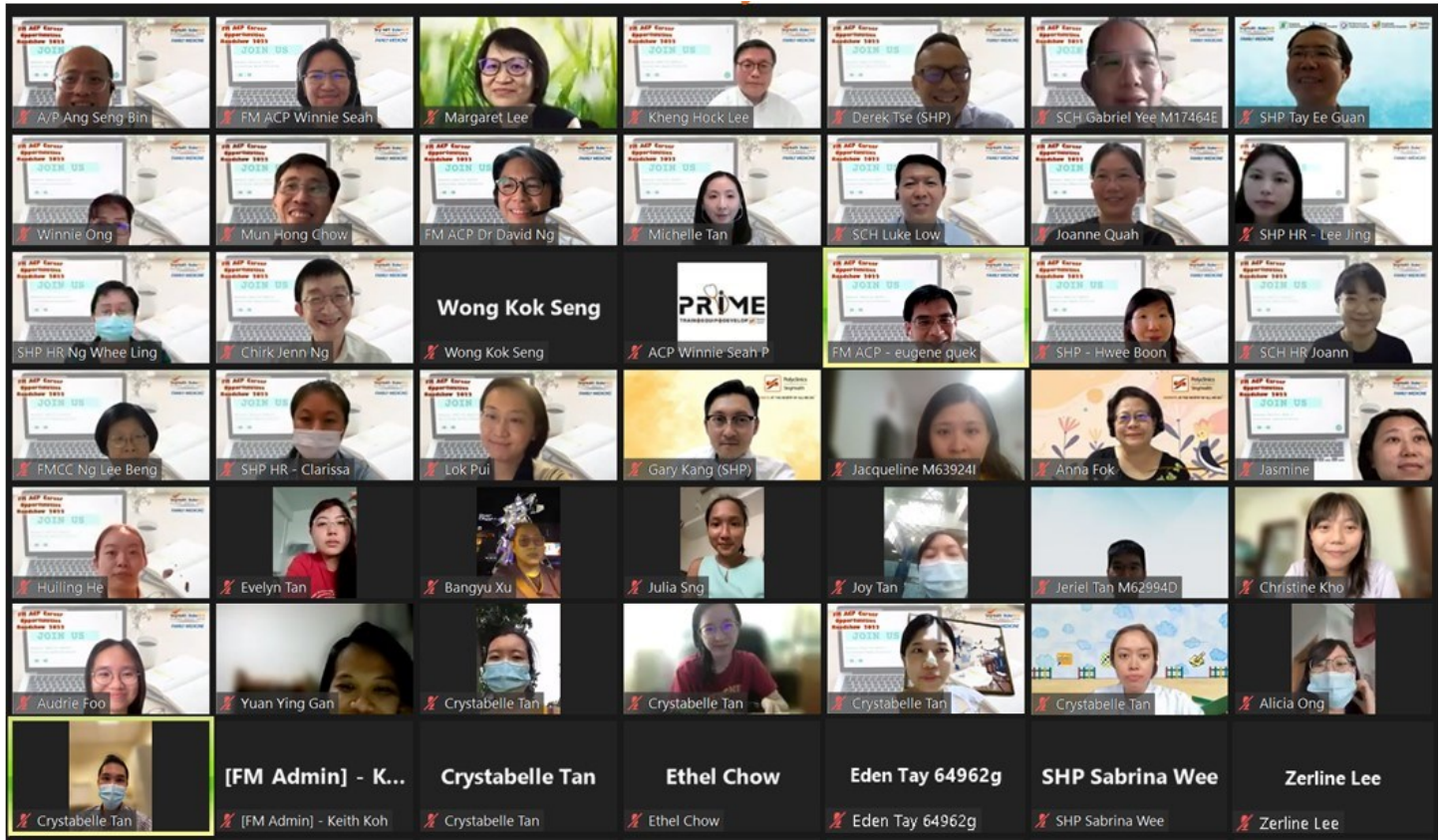
The DA is currently being used by doctors at the Tampines Polyclinic as a decision support tool. Further evaluation will be done to validate it for clinical practice.

*Content and photo courtesy of Corporate Communications, SHP*



## FM ACP Career Opportunities Roadshow (14 January)

This annual event, organized by FM ACP, aimed to share with the Year 3 Family Medicine residents on the career opportunities and job scope in the FM ACP member institutions and departments.



About 60 participants attended the Roadshow, including Year 3 FM residents and representatives from the various FM institutions and departments.

## Mother and Child Health Webinar 2022 (12 February, 19 February & 5 March)

This webinar, organised by KK Women’s and Children’s Hospital (KKH) and SHP, and supported by Temasek Foundation and SingHealth Office of Regional Health, was held to reach out to the public. It focused on pre-pregnancy health, growth and development of children as well as parents’ emotional health. Experts from KKH, SHP and National Library Board came together to give insights into a variety of topics related to the well-being of mothers and young children.

The attendance for the 3-day webinar was 347, 348 and 373 respectively for 12 February, 19 February and 5 March.



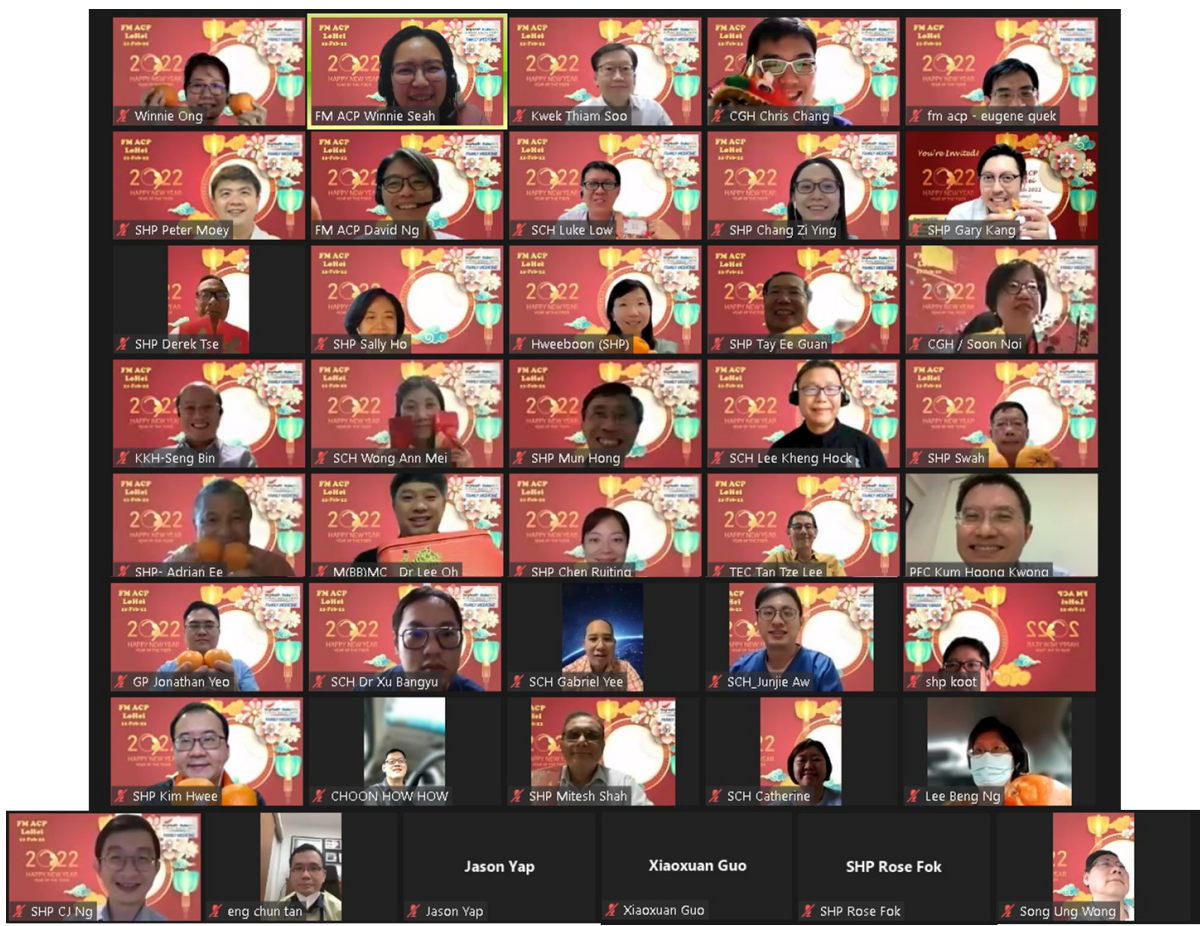
Dr Poon Zhimin (Associate Consultant, SHP–Sengkang) gave a talk on the facts and myths of neonatal jaundice and helped to clarify on the causes, symptoms and treatment of neonatal jaundice.



Dr Ng Chung Wai's (Senior Consultant, SHP-Outram) talk on the importance of childhood vaccinations and he addressed queries on common side effects and COVID-19 vaccination for parents.

### FM ACP lohei (14 February)

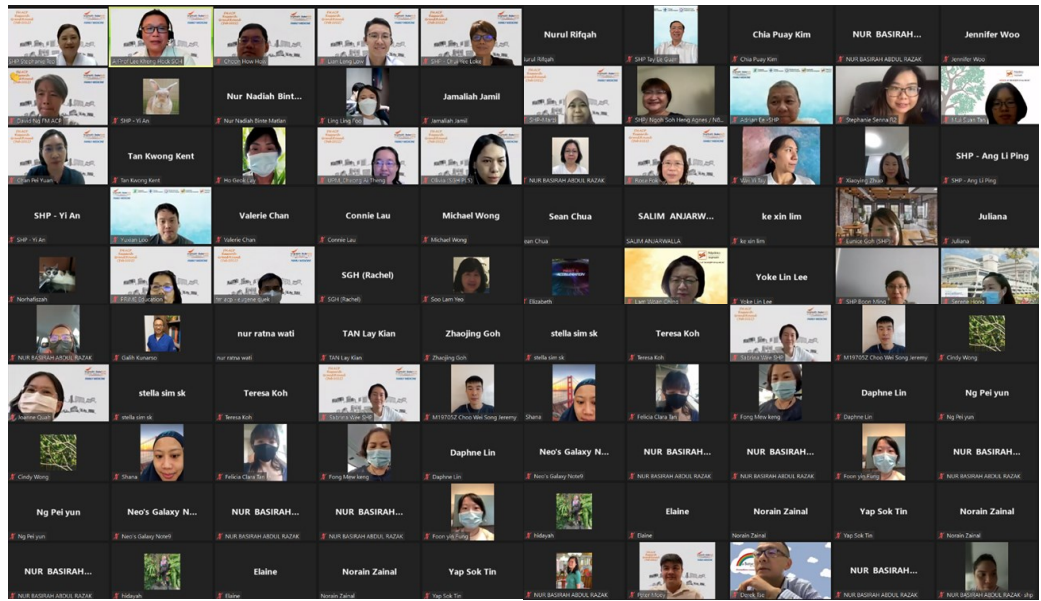
More than 50 FM ACP faculty bonded virtually at the annual lohei. Anxiously anticipating to meet face-to-face at the 2023 lohei!





# FM ACP Research Grand Round (25 February)

A platform to showcase research collaborations and projects in FM ACP and with other stakeholders. The theme for this Grand Round was **“Improving Population Health through Seamless Care Transitions”**. The event attracted 150 participants.



Singapore is transforming its healthcare model towards Population Health for better health outcomes at sustainable cost. A key strategy is to ensure better care integration and coordination when complex patients transition across acuity settings.


Three speakers shared their work in care transition programmes from different settings and presented the key findings and implementation lessons.



**Clinical Assoc Prof Low Lian Leng**  
 Director, SingHealth Office of Regional Health (SORH), SGH Campus  
*“Integrated General Medicine in Singapore General Hospital – What works, Why and for Whom?”*



**Ms Stephanie Teo**  
 Chief Nurse, SingHealth Polyclinics  
*“Community Nursing Programme Evaluation”*



**Clinical Assoc Prof How Choon How**  
 Director, SORH, East Campus  
*“Population Health Overview in the East: CGH RHS Programmes”*

“The content are relevant to what I wanted to know.”



“A very lively sharing of the good works done.”

## SingHealth Polyclinics Quality and Innovation Day (5 March)

“Improving Health, Improving Lives – Together” was the theme for this year’s SingHealth Polyclinics Quality and Innovation Day (QID). The theme focused on how we can better care for not only our patients, but also the wellbeing of ourselves and our colleagues.

“The things we do have huge national impact, and we succeed together with our teams, community partners, and our patients. Deep engagement is important, and for both patients and staff, it is nothing **about me without me.**”

*Dr Chow Mun Hong  
Director, Quality Management, SHP  
Vice Chair, Strategy & Innovation, FM ACP*

### CARING FOR THE POPULATION

#### We make a difference to the health of Singapore

- Whilst we plan for the healthcare delivery for the population
- The individualized care for each patient is important
- From a Million to One !



*Extracted from the plenary presentation by  
Dr Michael Wong (RHS )*

### PARTNERING WITH COMMUNITIES

#### Combining our strengths for our patients

- Collaborative partnerships between Primary care and Community partners
- Social-health integration at system and individual level
- This has improved clinical outcomes and quality of life for patients with complex needs



*Extracted from the plenary presentation by  
Dr Hu Pei Lin (SHP)*



## **PARTNERING WITH PATIENTS**

### **Nothing about me without me**

- Build trust & establish relationship with patients and family members
- Understand your patients in the context of their life
- Shared decision making and collaborative goal setting with our patients



*Extracted from the plenary presentation by Dr Moosa Aminath Shiwaza (SHP).  
Cartoon illustration by Dr Shiwaza*

## **CARING FOR OURSELVES AND OTHERS**

### **Self Care to Care**

- Purpose driven to our call as healthcare workers
- Team(s) – Work
- You are not alone. Journey together, support each other
- TOGETHER – a sweeter future

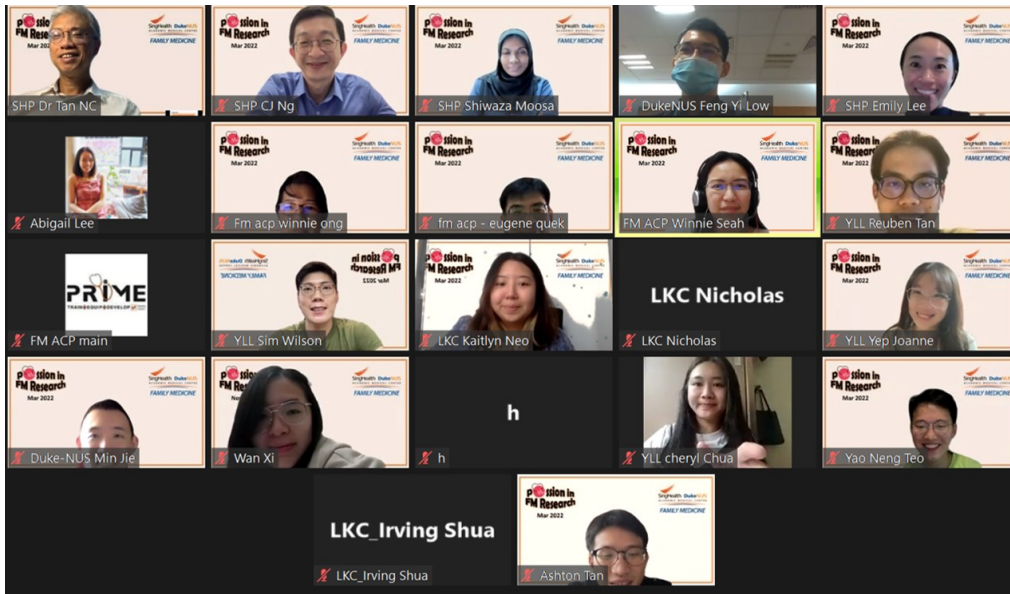


*Extracted from the plenary presentation by Dr Wong Wei Teen (SHP)*

“Each of us play an important role in improving the lives and health of the patients we care for, the friends and colleagues that we work with. Together as **ONE SHP**, with our community partners and patients, we can **improve health and improve lives.**”

*Dr David Ng  
CEO, SHP  
Chair, FM ACP*

## FM ACP Passion in FM Research (17 March)



About 20 medical students from the three local medical schools attended this event to find out more about the research opportunities available in FM ACP institutions and departments.

Passion in FM Research is organised regularly throughout the year.

"It was very informative and (sic) the doctors in charge of the research were there to answer questions head on."

"More time for the various sharings of the projects."



"Opportunities offered and details about the different projects."

"Project sharing! And the three themes of FM research overview at the start."

## What's happening from April to June 2022

- 14 April FM ACP Innovation Hour
- 20-21 April Family Medicine ACP Quality Festival 2022
- 19 May World Family Doctor Day
- May SHP Fellowship Mock Exam
- 4 June SHP GDFM Preparatory Workshop