

We are



SingHealth **DukeNUS**
ACADEMIC MEDICAL CENTRE

PAEDIATRICS

TRANSFORMING
HEALTHCARE
IMPROVING
OUTCOMES

FOREWORD



Assoc Prof Ng Kee Chong

Academic Chair, Paeds ACP
Chairman, Division of Medicine, KKH
Senior Consultant, Department of
Emergency Medicine, KKH



Prof Ho Lai Yun

Academic Deputy Chair, Paeds ACP
Emeritus Consultant
Department of Neonatal and
Developmental Medicine, SGH

We are happy to report that there have been substantial progress and much has transpired in our academic journey over these last five years. Good sound clinical paediatrics is inextricably tied to good clinical education and good clinical research.

In Research, we are building a sustainable system within our Academic Clinical Programme (ACP) to drive clinical and translational research. Prof Salvatore Albani, a world-renowned paediatric rheumatologist, joined us in 2013 and set up the SingHealth Translational Immunology and Inflammation Centre (STIIC) at Academia. He is our first Singapore Translational Research Investigator Award (STaR) awardee from National Medical Research Council (NMRC). In these short three years, Prof Albani has been actively mentoring and nurturing our young clinician scientists – both from SingHealth Paediatrics as well as from within SingHealth.

We have grown a fledgling group of clinician researchers that now includes Dr Saumya Shekhar Jamuar, Dr Wendy Liew Kein Meng, Dr Chong Shu-Ling, Dr Lek Ngee, Dr Lee Jan Hau, Dr Teo Wan Yee, Dr Yeo Joo Guan, Dr Yeo Kee Thai and many others. Dr Lek Ngee and Dr Teo Wan Yee were awarded the NMRC Transition Award in 2015 and 2016 respectively.

In Education, we continue to drive excellence in paediatric education not only for our Pediatrics Residency Program but also the paediatric curriculum for Emergency Medicine, Family Medicine Residency Programs and residency programmes from other Sponsoring Institutions. We are now training undergraduate students in paediatric medicine for all the three medical schools in Singapore, namely Duke-NUS Medical School (Duke-NUS), National University of Singapore (NUS) Yong Loo Lin School of Medicine (YLLSoM) and Nanyang Technological University (NTU) Lee Kong Chian School of Medicine (LKCMedicine).

We are increasingly tapping into philanthropy to drive excellence in academic paediatric clinical care. We have partnered across ACPs with Department of Paediatric Surgery and the Neurosurgical Service at KK Women's and Children's Hospital (KKH) and obtained funding from VIVA Foundation for Children with Cancer (VIVA) to drive the Paediatrics Brain & Solid Tumour initiative. The Children's Cancer Foundation (CCF) has also helped us set up the "CCF Psychosocial and Supportive Care Programme for Paediatric Oncology" and the "CCF Paediatric Oncology

Survivorship Programme”, among others. In addition, Temasek Foundation Cares has helped us set up various community outreach programmes in these last few years.

In February 2014, we celebrated the 75th Birthday of Prof Tan Cheng Lim and used the opportunity to recognise and give credit to a peerless paediatrician educator that many physicians in Singapore have been taught by and deeply respect. The Tan Cheng Lim Research & Education fund was set up to mark this occasion.

We strongly espouse the concept and value of “One-Body/Many-Parts”. In any cohesive union, different members play varying but equally important roles – be it as a master clinician, clinician-educator or clinician-researcher. However, no one part is better than the others and the strength of the union far out-weighs the sum total of its individual parts. It takes a diverse, but well coordinated village to deliver optimal paediatric care to our community. We believe that this has now largely been imbued and grafted into our Paediatrics Academic Clinical Programme (Paeds ACP) DNA and culture.

Inclusive diversity is strength. Our paediatric family has now grown to be more inclusive, allowing for the diversity we need and embracing not just clinicians but also nurses as well as allied health professionals and our administrators. We would like to personally thank the pioneer clinician-leaders from our Paeds ACP - Prof Chay Oh Moh (the first Chair of the Paeds ACP), Prof Phua Kong Boo, Assoc Prof Law Hai Yang and Dr Chan Yoke Hwee as well as our pioneer ACP administrators – Jaxii, Julia, Fu Sheng, Winny, Brenda, Doreen and many, many others who have helped build and bring our ACP to where it is today.

We must always remember that patients and their families are at the heart of all we do. As we reflect and dwell on the achievements and accomplishments over the last five years, we need to continue to consolidate, strengthen and deepen the foundations we have laid down – so that our children and their families will have better and healthier lives, not just physically but mentally and holistically.

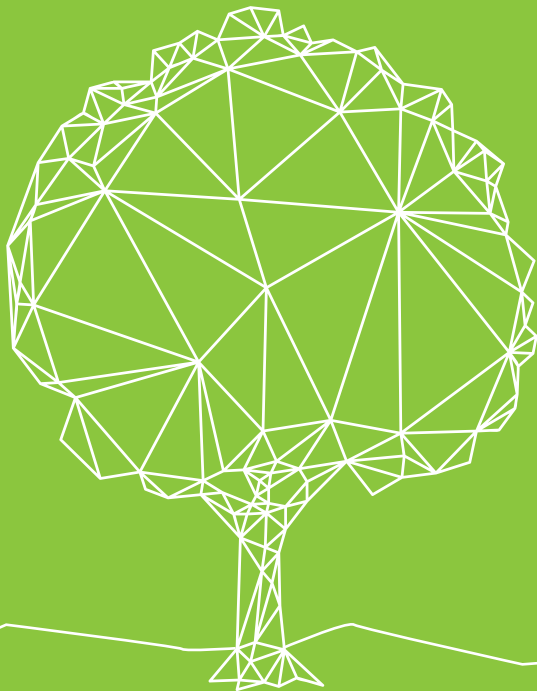


“One never notices what has been done; one can only see what remains to be done.”

Marie Curie

MISSION AND VISION

To Lead and Run a Sustainable Paediatric Ecosystem for Singapore through local and international collaborations by innovating and improving clinical care with research and education.



PAEDIATRICS ACP KEY APPOINTMENT HOLDERS



**Assoc Prof
Ng Kee Chong**
Academic Chair



Prof Ho Lai Yun
Academic Deputy
Chair



Dr Chan Yoke Hwee
Academic
Vice Chair,
Clinical



Prof Phua Kong Boo
Academic
Vice Chair,
Education



**Assoc Prof
Derrick Chan**
Academic
Vice Chair, Research



**Assoc Prof
Chong Chia Yin**
Director,
Clinical Quality &
Patient Safety



**Assoc Prof
Loh Tsee Foong**
Deputy Academic
Vice Chair,
Education



**Assoc Prof
Law Hai Yang**
Senior Director,
Research

PAEDIATRICS ACADEMIC MEDICINE PARTNERS



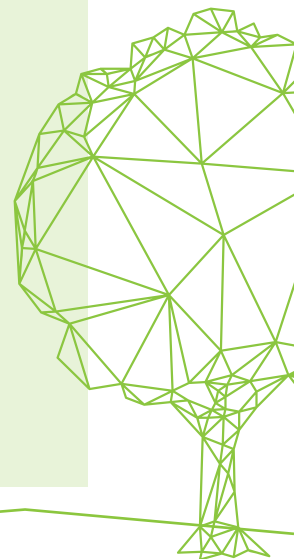
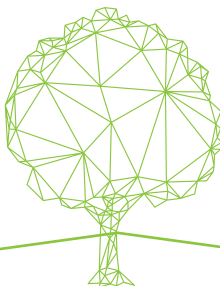
**ALLIED HEALTH
PROFESSIONAL LEAD**
Ms Quay Siew Ching Irene
Assistant Director,
Allied Health Office
Head, Pharmacy Department
Division of Allied Health Specialties, KKH



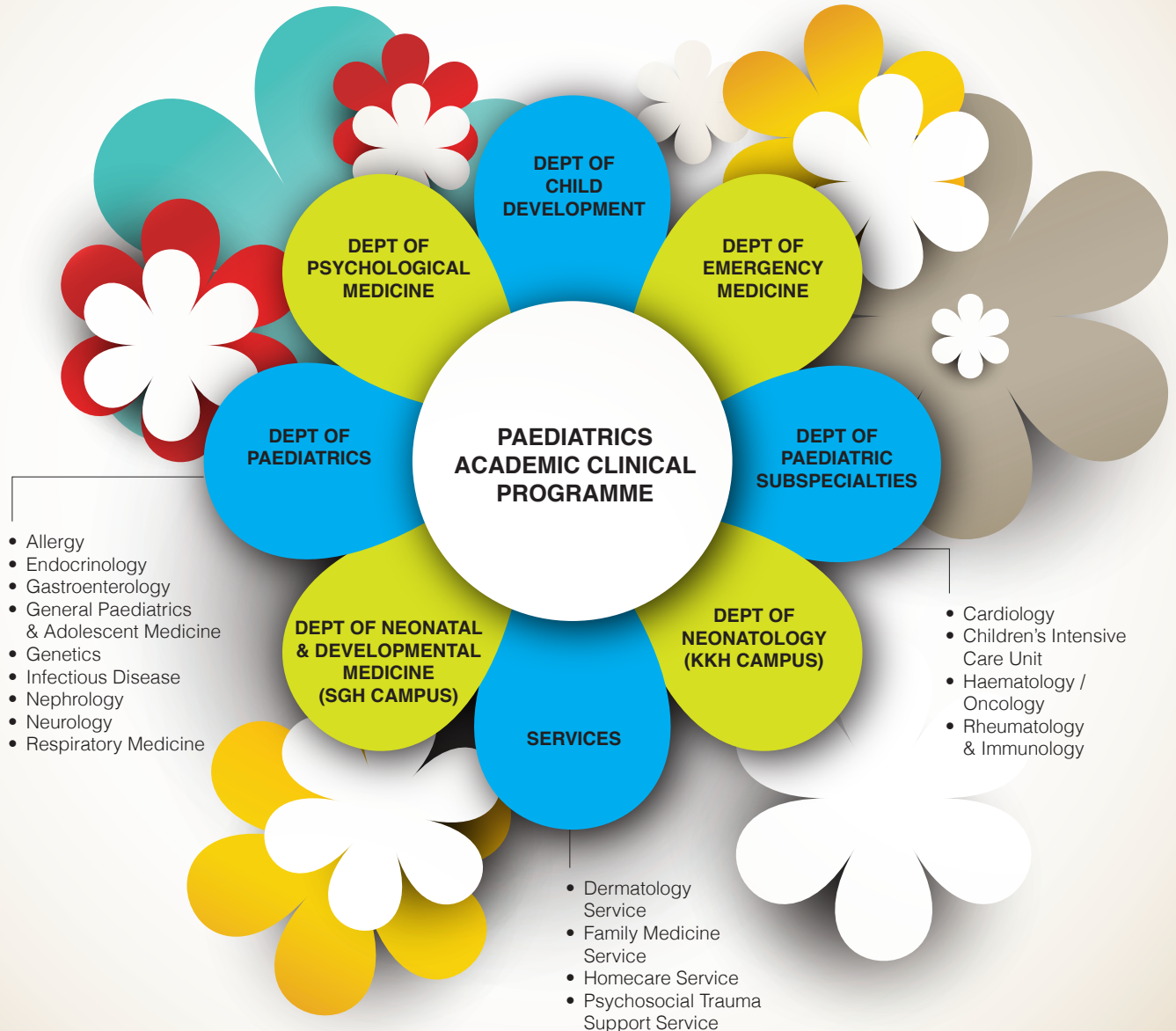
**ALLIED HEALTH
PROFESSIONAL LEAD**
Mr Satyaki Sengupta
Deputy Director
Division of Allied Health
Specialties, KKH



NURSING LEAD
Ms Lee Siew Kum
Assistant Director
Division of Nursing, KKH



ORGANISATION CHART

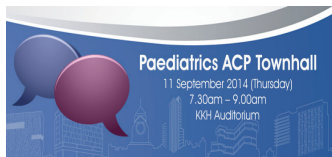


EVENTS



Town Hall

The Paeds ACP conversations with SingHealth Duke-NUS Academic Clinical community was held on 11 September 2014.



Academic Hour

Paediatrics, Gynaecology and Oral Health ACPs co-hosted the Academic hour on 5 November 2015. This session aimed to showcase upcoming opportunities for partnerships and how the community can be a part of it.





Leadership Forum

Paeds ACP Leadership Forum is a platform for faculty and junior doctors to review the past year's achievements and forge future plans. It promotes the exchange of ideas and camaraderie among the ACP faculty.



2015 Leadership Forum

Projected Paeds ACP's 10 years vision developed during retreat



2013 Leadership Forum



2015 Leadership Forum



2016 Leadership Forum



Research & Education Day

Paeds ACP held its inaugural Research & Education Day on **22 February 2014**. Since then, this has become our annual event, showcasing experts' talks and projects on Research and Education by our fellow colleagues in Paediatrics. A poster competition is held and prizes would be given to residents with outstanding oral and poster presentations.

The second Research & Education Day was held on **24 January 2015**, during which a record high of 63 abstracts were received. The third Research and Education Day on **20 February 2016** saw the highest attendance of 192 participants.



CLINICAL



Time flies! Paeds ACP has turned five in 2016!

It has been a busy but fulfilling journey for us in the last two years, as we strive to improve clinical outcomes with academic medicine. Being the largest Children's Hospital in Singapore, we see ourselves as playing a critical role in building strategic partnerships

with the community to improve child health nationwide. Initiatives such as the Temasek Foundation Cares Kids In Tough Situations (KITS) Programme, Kids Integrated Development Service 0-3 (KIDS 0-3), Stay Prepared - Trauma Network for Children and the partnership programme between KKH Paediatric Homecare Programme and St. Andrew's Community Hospital have shown rewarding results. The Child Development Outreach Team led by Assoc Prof Lim Sok Bee was awarded the National Clinical Excellence Team Award for its community outreach effort for preschool children with developmental needs, the Psychosocial Trauma Support Service (PTSS) received the PS21 Distinguished Star Service Team Award for the stellar multidisciplinary teamwork shown in the KITS Programme and Dr Peter Wong was conferred the PS21 Star Service Award.

At the forefront of tertiary paediatric care, we also saw the consolidation of the Paediatric-Neonatal Extracorporeal Life Support Programme as well as the development of the Genodermatosis Clinic and the Antibiotic Stewardship Programme, to name some. Tertiary paediatric specialties have indeed grown from strength to strength.

We must also thank the Ministry of Health, the Ministry of Social and Family Development and other government organisations for the strong financial support of many of our clinical initiatives, totalling \$15 million in FY15.

The future will be an even more exciting journey for us. We see ourselves growing as a tertiary paediatric centre and at the same time, working with our community and primary partners to build a cohesive and holistic ecosystem for child health in Singapore.

Dr Chan Yoke Hwee

Academic Vice Chair, Clinical, Paeds ACP
Deputy Chairman, Division of Medicine, KKH
Head & Senior Consultant, Children's Intensive Care Unit
Department of Paediatric Subspecialties, KKH



As the newly appointed Director of Quality Improvement and Patient Safety (QIPS) for Paeds ACP in 2015, my role is to promote QIPS for all departments and services within the division. My journey in quality improvement began in 2002 and included improving patient outcomes in reducing maternal to child HIV

transmission, invasive pneumococcal disease study resulting in national pneumococcal conjugate vaccination, implementing pertussis vaccination for staff since 2008.

Patient safety is critically important as we need to ensure no preventable harm comes to our patients, hence the movement in KKH "Target Zero Harm". Patients expect us to do our best for them and ensure that healthcare is safe, so in 2016 KKH launched the "Speak up for Safety" campaign which will eventually lead to all staff being trained to speak up their concerns for safety reasons. Across the division, various new initiatives have improved patient safety: preventing blood wastage for exchange blood transfusion in neonates, blood sample-labeling for mother-baby pairs for neonatal jaundice, infection control bundles for device care in Intensive Care Unit (ICU), antimicrobial guidelines, improving hand hygiene adherence to the 5th moment in Neonatal Intensive Care Unit (NICU) and reducing time to first dose of antibiotics in febrile neutropenic oncology patients.

The above are just some of the many examples of improving quality and patient safety. I regret that due to space constraint we are not able to highlight all the projects undertaken. I hope that more staff will be trained in quality improvement methodology and continue to improve all aspects of patient care.

Assoc Prof Chong Chia Yin

Director, Quality Improvement and Patient Safety, Paeds ACP
Senior Consultant, Infectious Disease Service
Department of Paediatrics, KKH

i. CLINICAL QUALITY & PATIENT SAFETY INITIATIVES

KKH Vaccine Pocketbook smartphone application with Singapore's first ever Vaccine Calculator

- A comprehensive reckoner and handy tool for all practitioners prescribing vaccinations
- An outcome of over two years of painstaking effort in developing algorithms to enhance safety in vaccine prescription

HLA-B*1502 Testing for Carbamazepine Severe Adverse Drug Reaction in Children

Singaporean children of Chinese and Malay ethnicity and who are HLA-B*1502 positive have increased risk of developing Stevens-Johnson Syndrome with carbamazepine. The study by the Paediatric Neurology team and Genetics lab established the risk in children, resulting in:

- Set-up of a national testing centre for HLA-B*1502 testing
- Seamless checking for HLA-B*1502 result in the SingHealth electronic prescription system cluster-wide when prescribing carbamazepine

Clinical Indicator dashboard

- A hospital-wide initiative for a more efficient updating and monitoring of clinical indicators
- Constant updates have been obtained from the respective department and services

Singapore Healthcare Improvement Network (SHINE) Hand hygiene

- Patients are empowered to remind staff and visitors to perform hand hygiene
- Real-time verbal/bell reminders and feedback to staff on hand hygiene
- Clips/identifiers of near-empty bottles
- Moisturizer available at nursing counters and medical officers' rooms

Impact of a Dengue Clinical Pathway on Clinical, Safety and Health Service Outcomes in Paediatric Patients

- Audit showed that patients managed using the dengue Clinical Pathway guideline had a shorter length-of-stay and were more likely to be discharged appropriately to primary care
- There were no obvious increases in negative clinical outcomes or resource utilisation for patients managed according to the pathway

Use of Rehabilitation Rooms for Children's Emergency Patients

- Following a feasibility study to analyze the Children's Emergency (CE) patient workload and Rehabilitation space utilization, risk mitigation was performed prior to this integrated approach to utilize resources more effectively, manage patients more efficiently and improve patient experience
- The use of the Rehabilitation rooms (after office hours) has eradicated potential for cross-infection and improved patient confidentiality and patient safety

ii. HOSPITAL-WIDE CLINICAL INITIATIVES

Enhanced ECMO (Extracorporeal Membrane Oxygenation) Programme

- Developed workflow for out-of-hospital ECMO Transport
- ECMO Specialist Training Programme
- Bi-annual ECMO Workshops

Transition of Care from Paediatrics to Adult Care

The workgroup was set up in September 2015 to develop a framework and establish guidelines to facilitate the transition of paediatrics patients from KKH to SGH. The goals of the programme are to:

- Provide high-quality care that is: Uninterrupted/seamless through a coordinated, age and developmentally-appropriate, and patient-centred approach
- Promote patient skills: Communication; Independence and self-care; Problem-solving and decision-making
- Provide support for the carer
- Maximise the young persons' life-long functioning and potential

General Paediatrics, Department of Paediatrics Complex Care

- New service for children with medical complexity who have chronic conditions in three or more organ systems requiring care from multiple specialties and medical technology.
- This multidisciplinary team-based initiative aims to provide care coordination to address the following:
 - Inter-related medical, developmental, psychological and social issues to achieve optimal health and wellness outcomes
 - Care efficacy and experience for the patient and family
 - Healthcare costs and utilisation

Balaji-Sadasivan Endowment – Donor Human Milk Bank Programme

- A 3-year project supported by Temasek Foundation Cares with an aim to establish the first human donor milk bank in Singapore, sited in KKH by 2017
- Work has started since 2 June 2016. After the bank is operational, premature and sick infants with insufficient own mother's milk will receive pasteurised donor human milk instead of formula milk
- Beneficiaries will be from the Neonatology units of KKH, SGH and National University Hospital (NUH)

Group Therapy for Children with Attention-deficit hyperactivity disorder (ADHD) and/or Oppositional Behaviours

- To enhance clinical recovery and children have opportunity of learning from each other
- The team comprising of a child psychiatrist, case manager and psychologists collectively run six sessions of group therapy for children with ADHD and/or Oppositional behaviours, from 10 years to 12 years old

Neonatal Jaundice (NNJ) Profile bloods (Mother and Baby)

- This was a collaboration between Information Systems, Admissions, Laboratory, Division of Medicine and initiated in October 2015 by the Division of Medicine, KKH

ii. HOSPITAL-WIDE CLINICAL INITIATIVES

Baby Friendly Hospital Initiative (BFHI)

- KKH and SGH have been accredited as a baby-friendly hospital under the BFHI
- The implementation of the BFHI guidelines and accreditation in Singapore is led by Health Promotion Board (HPB) and Association of Breastfeeding Advocacy (Singapore)

New Paediatric Neuro-Oncology Clinic

- The new Paediatric Neuro-Oncology multidisciplinary clinic commenced in March 2016
- To provide a holistic, one-stop service to patients with brain tumours
- Collaboration between medical professionals and allied health professionals namely Occupational Therapists, Physiotherapists, Speech Therapists and Psychologists to provide therapy input and advice to patients

Implementation of Home Total Parenteral Nutrition (Home TPN)

- The Home TPN programme was introduced to allow parents and caregivers to care for their child on TPN at the comfort of home
- Patients and their families can benefit from the better quality of life at home
- Hospital beds can be released for patients with acute conditions

iii. COMMUNITY PAEDIATRIC INITIATIVES

HiRiSK (Multidisciplinary Screening Programme for High Risk Kids) Project

- Health Service Development Project (HSDP) funded 4-year project
- Designed for surveillance and screening of infants who are at high risk for developmental delay and learning difficulties
- For early intervention to be instituted to ensure the best potential outcome for the child
- A dedicated developmental nurse conducts the screening assessments and provides parental education
- Children are screened at 9 months, 18 months, 30 months and 48 months of age This is in keeping with the guidelines by the Early Intervention Programme for Infants and Children (EIPIC) baseline study and the American Academy of Pediatrics
- Interim results show that 48% of HiRiSK infants passed the screening, 5% were referred for early intervention, 47% were in the monitoring zone and are being closely monitored

CLASS (Consultation in Language Acquisition for Students' Success Programme)

- Aims to achieve not only higher levels of language in the child but also independence of the Language Facilitator in conducting language intervention within the school setting

iii. COMMUNITY PAEDIATRIC INITIATIVES

Temasek Foundation Cares Kids In Tough Situations (KITS) Programme

A 3-year pilot project established by the joint collaboration of KKH and Temasek Foundation Cares with the following aims:

1. To equip counsellors and social workers in the community and schools with Trauma-Focused Cognitive Behavioural Therapy (TF-CBT), so that children and adolescents in Singapore, who are affected by trauma, may receive more timely delivery of an effective trauma treatment
2. To develop and build an evidence-based, culturally-sensitive trauma-focused intervention that effectively reduces post-trauma symptomology in children and adolescents affected by trauma events
3. To create a self-sustaining trauma treatment and training programme in our community by growing local trainers who can train and develop TF-CBT expertise in Singapore
4. To increase trauma awareness in Singapore, what trauma is, its impact, how and when to seek treatment

Children's Cancer Foundation Psychosocial and Supportive Care Programme for Paediatric Oncology

- A collaboration between Paeds ACP and CCF
- The programme is conducted over a period of 3 years and encompasses three essential complementary components of care for children with cancer, namely, in areas of Neuro-psychosocial, Rehabilitation, and Dietetics and Nutrition
- Outcome measures of the programme conduct in the form of a research

Model of care for Paediatric Anticipatory care

- Develop a model of care for Paediatric Anticipatory care – a 21st century Maternal and Child Health Care (MCHC) model for Singapore beyond SG50

Building of Capacity and Capability for Paediatrics in the Intermediate and Long Term Care (ILTC) Sector

- The General Paediatric Service within the Department of Paediatrics has been in active partnership and collaboration with the ILTC Sector in training programmes and joint rounds
- There is ongoing engagement with St. Andrew's Community Hospital, Singapore Christian Home and Assisi Hospice

Early Childhood Holistic Outcomes (ECHO) Framework

- Uses Early Childhood Outcome (ECO) framework from USA to enhance Early Intervention Programme for Infants and Children (EIPIC)
- A strategic tripartite partnership between Lien Foundation, KKH Department of Child Development (DCD) and Thye Hua Kwan Moral Charities Ltd (THK EIPIC Centres), in collaboration with the Early Childhood Technical Assistance (ECTA) Centre in USA
- Funded by Lien Foundation for three years, 2014-2016

iii. COMMUNITY PAEDIATRIC INITIATIVES

Kids Integrated Development Service 0-3 (KIDS 0-3)

- Through a multi-disciplinary team and home visiting services, the programme supports pregnant mothers from at-risk families to optimise growth and development of their infant from birth up to three years old
- Initially funded by Temasek Foundation Cares; and subsequently a part of KidSTART programme (led by the Early Childhood Development Agency) since July 2016
- KIDS 0-3 was officially launched on 1 July 2014
- KIDS 0-3 Centre was launched by President Tony Tan on 9 October 2015. The Centre complements the home visiting services and provides a networking venue and support in the community for families in the programme

MOH-Transformation of Paediatric Services Taskforce

- Set up by Ministry of Health (MOH) with effect from 21 September 2015
- Chaired by Prof Chee Yam Cheng and KKH representatives include Assoc Prof Ng Kee Chong, Dr Chan Yoke Hwee and Dr Ng Yong Hong

Paediatric Homecare Service

- Partnership homecare programme with St. Andrew's Community Hospital through Agency for Integrated Care (AIC) for technologically dependent children
- RF-10 and MOH Development Fund
- Partnership opportunities with St. Andrew's Community Hospital and Singapore Christian Home
- Piloting virtual home visits with MOH Holdings (MOHH) telehealth Vidyo Mobile App

Stay Prepared - Trauma Network for Children

Another collaboration between KKH and Temasek Foundation Cares, which commenced on 1 April 2016. It is a 3.5-year project that aims to enhance the involvement of our community in trauma-informed care, for both disaster and peace time, through the following ways:

- Build greater capacity of community-based counsellors and social workers in a locally-adapted Trauma-Focused Cognitive Behavioural Therapy (TF-CBT)
- Develop and validate a culture-sensitive model that provides immediate psychological support after crises or daily stressors, through Psychological First Aid for Children and Let's Cope!® (Mental Health First Aid, Singapore – Crisis Intervention for Children and Youth)
- Establish a network of Kampong Kakis (including community leaders, seniors and lay volunteers) with the requisite immediate psychological support skills to help children and their families during peace time and crises
- Establish a trauma learning network of community-based therapists and school counsellors, who are skilled in trauma-focused interventions, immediate psychological support and disaster response for children and families in Singapore



Official launch of the Trauma Network for Children - A "Stay Prepared" Initiative



Launch of the Temasek Cares KIDS 0-3 Centre



KKH and SGH accredited as a baby-friendly hospital under the Baby Friendly Hospital Initiative



Psychosocial Trauma Support Services Clinical Case Discussion

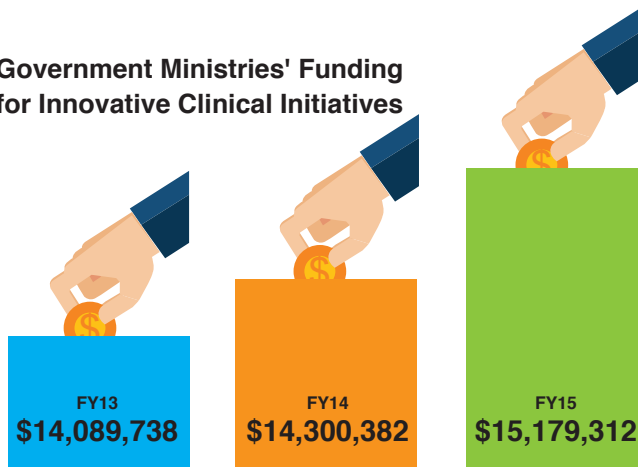


KEY FACTS AND FIGURES (FY15)

149
Specialists



Government Ministries' Funding for Innovative Clinical Initiatives



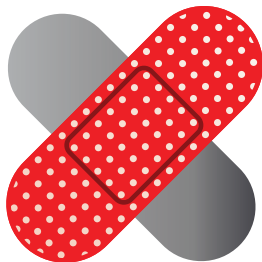
OUTPATIENT ATTENDANCES

182,939
Children's Emergency

88,966
Paediatrics

14,261
Child Development

18,103
Neonatal (KKH and SGH Campuses)



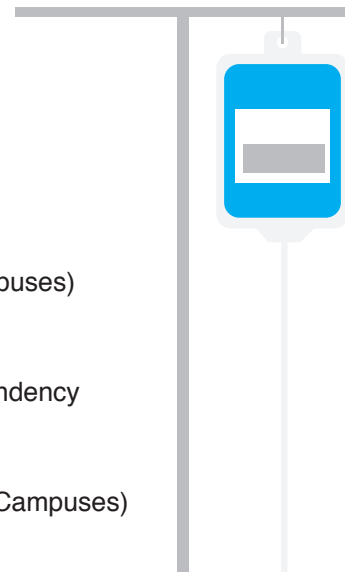
INPATIENT ADMISSIONS

26,264
Paediatrics

13,204
Neonatal (KKH and SGH Campuses)

1,026
Paediatric ICU and High Dependency

713
Neonatal ICU (KKH and SGH Campuses)



OUR CLINICAL CHAMPIONS



The Department of Child Development (DCD) outreach journey into the community has the potential of impacting service and care for many families. One of the DCD community outreach programmes, Supporting Autism through Family Empowerment (S.A.F.E.), funded by Temasek Foundation Cares, is the first home-based support programme for families of children who have received provisional diagnosis of Autism Spectrum Disorder. A multi-disciplinary team conducts home visits to support caregivers within their daily home routine, empowering them to feel more confident to manage their children during this stressful period. This innovative programme has the potential to impact the early intervention landscape nationally.

Assoc Prof Lim Sok Bee

Senior Consultant and Senior Mentor
Department of Child Development, KKH



These five years has seen the consolidation of a more formalised structure in delivering and facilitating education and research for trainees in Paediatrics at both the undergraduate and postgraduate level as well as for faculty. The early induction of residents as teachers in medical education for undergraduates with the Paediatric Residents as Teaching Advocates (PRATA) project is a great initiative that can go a long way in this journey.

The provision of better support for research and easy access to medical education workshops for faculty has also facilitated growth of interested individuals to achieve greater personal development in these aspects.

Dr Ng Yong Hong

Head, Department of Paediatrics, KKH
Head and Senior Consultant, Nephrology Service
Department of Paediatrics, KKH

OUR CLINICAL CHAMPIONS



The Department of Neonatology has a tremendous potential for clinical research. Among the many research initiatives in the department, four multicentre trials are noteworthy – PATCH (Allergy Prevention) Study, Mercurius Study (innovative infant formula with large phospholipid coated lipid droplets), Neonatal Electrographic Seizure Trial and the N3RO (DHA supplementation) study. The N3RO study when completed is expected to have a significant impact on very preterm infants by reducing the rate of bronchopulmonary dysplasia and improving the neurodevelopmental outcome.

Prof Victor Samuel Rajadurai
Senior Consultant
Department of Neonatology, KKH



Since starting our psychiatric services here in the area of women's mental health, and then child and adolescent mental health, we have come to appreciate how important and relevant the academic clinical approach is. For it creates a framework that enables us to build on our expertise, learning as we go along, and sharing this information within our team, and with our healthcare colleagues, as well as our community partners. I'm excited where this journey takes us, as it breathes life into each person's development – life is after all a learning journey for us, and the patients we care for.

Dr Helen Chen
Head and Senior Consultant
Department of Psychological Medicine, KKH

CLINICAL ACCOLADES

	Award-Winners
National Clinical Excellence Team Award 2015	1
Excellence in Public Service Awards (PS21) 2016 - Distinguished Star Service Team Award	1
Excellence in Public Service Awards (PS21) 2016 - Star Service Team Award	1
Excellence in Public Service Awards 2015 – PS21 Star Service Award	1
Healthcare Humanity Awards	9
National IT Excellence Awards 2016 – Champion for Health IT Excellence	1
MSF (Ministry of Social & Family Development) Volunteer Award	1
Home Team Volunteers Award (MHA)	1
MSF (Ministry of Social & Family Development) Volunteer Award: Friends of MSF	1
May Day Partnership Award 2016	1
National Day Award - The Public Administration Medal (Bronze)	1
National Day Award - The Commendation Medal	1
National Day Award - The Efficiency Medal	4
National Day Award - The Public Service Medal (MSF)	1
Asian Health Management Awards 2016 @ Vietnam	1
SingHealth Excellence Awards - Distinguished Champion of Change Leader Award	1
SingHealth Excellence Awards - Distinguished Team Award	2
SingHealth Awards - Outstanding Team Excellence Award	1
SingHealth Awards - GCEO Outstanding Clinician Award	1
SingHealth Distinguished Golden Achievement Award	1
SingHealth Best Registrars	3
SingHealth Excellence Awards - Outstanding Nurse Award/GCEO Excellence Awards	1
SingHealth Awards - Outstanding Allied Healthcare Provider	1
SingHealth Quality Service Award - Star	11
SingHealth Quality Service Award - Gold	16
SingHealth Quality Service Award - Silver	40
SingHealth 7th Allied Health Innovative Practice Award - Top Winner	1
SingHealth 9th AHIP GEM Award 2016	1
SGH Teams UP! Award (Most Improved Ward)	1
Conferment of Emeritus Consultant	2
Enterprise Risk Management (ERM) Excellence Award	1
KKH Service from the Heart/ SGH Service with a Heart	71

CLINICAL ACCOLADES



The team from Department of Child Development received the National Clinical Excellence Team Award at the National Medical Excellence Awards 2015.

Represented by Assoc Prof Lim Sok Bee, Dr Sylvia Choo, Mr Tang Hui Nee and Ms Oh Shu Jun, the team was honoured for their outstanding contributions as well as achievements in providing integrated family-centred and community-based outreach for preschool-aged children with developmental needs.



Dr Peter Wong from Emergency Medicine was conferred the PS21 Star Service Award at the annual Excellence in Public Service Awards 2015. The award recognises his attentiveness to the unique needs of each family and the encouragement that accompanies sound medical advice, so that parents can care for their children with confidence.



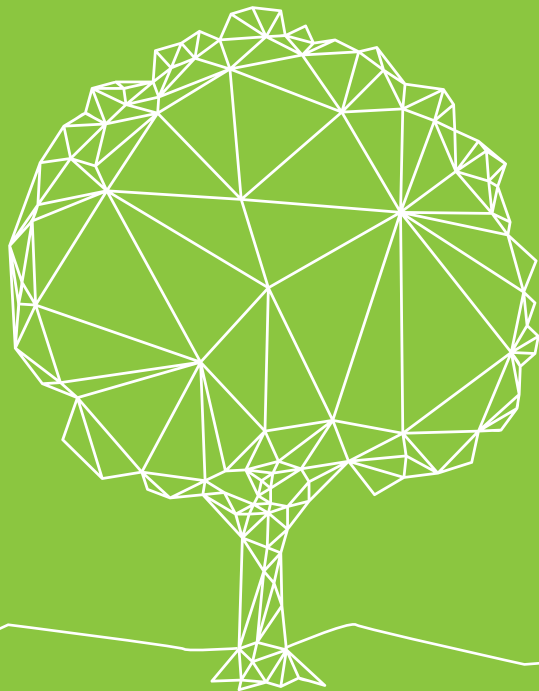
The Psychosocial Trauma Support Service (PTSS) received PS21 Distinguished Star Service Team Award for Stellar multidisciplinary teamwork at the Excellence in Public Service Awards 2016.

The PTSS Team partnered with Temasek Foundation Cares to launch the Temasek Foundation Cares KITS (Kids in Tough Situations) programme, which provides trauma-focused therapy in the community to children with emotional and psychological difficulties arising from traumatic events.

The effectiveness of the collaborative effort was evidenced in June 2015, when the KITS programme benefitted children who were caught in an earthquake in Sabah, Malaysia.

CLINICAL PLANS AND PRIORITIES

- Continue the development of Clinical Quality and Safety
- Continue to build Community Partnership and Care Coordination
- Advocate for National Efforts in Promoting Child Health



EDUCATION



In the first Paediatric Education Strategic Meeting on 17 March 2012, it was mooted that we would need to re-focus and standardise medical education for all students coming to KKH for clinical teaching from all three medical schools - Duke-NUS, YLLSoM and LKCMedicine. Subsequently the Paediatric Core Curriculum Committee (PCC) chaired by Assoc Prof Loh Tsee Fong and co-led by Assoc Prof Fabian Yap rolled out 11 core modules by 2014. Six more modules are now being developed. We also embarked on a PCC Redcap Trial for students to update the content of their tutorials and track their learning experience.

For the residents, we instituted mock examinations in 2012 and the MMed (Paeds)/MRCPCH Preparatory Course in 2013. The course was for residents to experience the atmosphere and setting of the actual exam and to brush up on their exposed weak areas. Under the Empowering Residents as Teachers (ERAT) programme, residents are encouraged to teach medical students to allow them to hone their skills and knowledge and promote their own continuing education at the same time.

During the Festschrift honouring Prof Tan Cheng Lim in 2014, we held the first Research and Education Day. The Tan Cheng Lim Research and Education Fund was launched. There is now a Tan Cheng Lim Professorship in Paediatric Oncology.

Looking forward, I would like to encourage more clinicians to embark on the education track, to continue to lead in Paediatric Education and to pass on to the future health professionals their skills, knowledge and most importantly the values, convictions and compassion to achieve the best possible care for our paediatric patients. Implementation of Inter-professional Education will improve health outcomes, staff morale and patient satisfaction. This empowers our move forward into closer inter-professional collaborative practice.

It leaves me to thank my fellow doctors and administrative staff for their support, without which we would not be where we are now.

Prof Phua Kong Boo

Academic Vice Chair, Education, Paeds ACP
Emeritus Consultant, Gastroenterology Service
Department of Paediatrics, KKH



I hope that the Paediatric Core Curriculum will lay a good foundation not just for training undergraduates in Paediatric medicine but will serve to provide a platform for the development of residency and fellowship programmes.

This is an important step in ensuring a continuum of paediatric medicine education for future generation of doctors and paediatric specialists.

Assoc Prof Loh Tsee Foong

Deputy Academic Vice Chair, Education
Paeds ACP

Senior Consultant, Children's Intensive Care Unit
Department of Paediatric Subspecialties, KKH

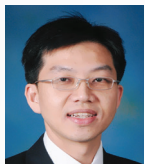
OUR EDUCATION CHAMPIONS



Paeds ACP is built on a strong foundation where medical learners with a variety of learning needs can benefit from the guidance and mentorship of our dedicated teaching faculty. A rich clinical environment, strong administrative support and use of multi-media and technical aids, greatly enhances the learning experience. This enables the medical learner of today to develop the requisite skills and competencies to face the challenge of meeting the complex healthcare needs of patients tomorrow.

Assoc Prof Daisy Chan

Head & Senior Consultant
Department of Neonatal and Developmental Medicine, SGH



Education and learning remains a cornerstone of our ACP, primarily because we understand that good clinical care cannot be delivered without holistic education of every individual involved in the care of the patient before us, as well as the next patient to come. We will need to continue to focus on the generativity aspect of education, promoting structured teaching and learning not only in a vertical step-wise manner but also horizontally and interprofessionally. We will also need to continually emphasise the transmission of values of the profession; of compassion, integrity and collaboration, above and beyond the science of medicine. As Albert Einstein once said: "Not everything that can be counted counts; not everything that counts can be counted"- we need to have wisdom to understand what counts.

Assoc Prof Thoon Koh Cheng

Head & Senior Consultant
Infectious Disease Service
Department of Paediatrics, KKH

OUR EDUCATION CHAMPIONS



Medical education to me is not only about teaching the facts or medical knowledge. We cannot know or teach everything in medicine, I focus on needs-based analysis by the students of where they have difficulty in grasping or understanding the topic or systems. I teach the big picture concepts or approaches, integrating basic sciences and clinical medicine, to drive understanding and ultimately, a passion for self discovery and learning. Medicine is also a social enterprise which involves dealing with people which I always try to emphasise to the students, and communication with our patients, parents and colleagues is an important aspect of medicine.

Dr Gan Bin Kee

Consultant
General Paediatrics & Adolescent Medicine Service
Department of Paediatrics, KKH



Clinician educators have evolved from being disengaged lecturers to motivators, mentors and role models. Our role is to facilitate learning rather than to provide knowledge, and to guide our learners through their journey in becoming the new generation of competent and compassionate paediatricians, as well as dedicated and inspiring educators.

Dr Cristelle Chow Chu-Tian

Consultant
General Paediatrics & Adolescent
Medicine Service
Department of Paediatrics, KKH



There are vast challenges facing medical educators. The ACP has provided us with various opportunities to improve and overcome these challenges and empower ourselves as educators.

Dr Sashikumar Ganapathy

Consultant
Department of
Emergency Medicine, KKH

RESIDENCY



The SingHealth Pediatrics Residency Program has grown from strength to strength. Starting in 2010 with an inaugural batch of 13 Residents, we are now reaching near steady-state. We currently have a total of 103 Residents: 66 Junior Residents and 37 Senior Residents. Our residents include individuals from a

spectrum of backgrounds, including graduates from our local medical schools, YLLSoM and Duke-NUS, as well as International Medical Graduates (IMGs) from the United Kingdom (UK), Ireland, Australia and Malaysia. Our first two pioneer cohorts of Senior Residents have just recently completed their training and exited in June 2016 and more recently in October 2016. Our Faculty strength numbers have also increased in tandem. In addition to the Program Director (PD), the Pediatrics Residency Program also has five Associate Program Directors (APDs) and 12 Core Faculty members from the various divisions and departments within which our trainees rotate through in KKH and SGH. The administrative team now has five Program Executives and one Associate Executive.

The SingHealth Pediatrics Residency Program has been constantly evolving to optimise the residents' learning and educational needs. In striving for continuous improvement, the program successfully held its inaugural Pediatrics Residency Forum in November 2015, which generated much lively discussion and feedback from both our Faculty and Residents. One example of this is the streamlining of the Monday afternoon resident teaching sessions, where potential pre-clinical and clinical candidates for the MMed exams have specially tailored teaching to meet their different examination preparation needs, and dedicated MMed clinical tutorials which are spearheaded by our Faculty.

Future educational initiatives include tailored teaching for the Exit Exams in a mock exam format. Residents are also actively encouraged to attend and present at the monthly departmental Research Rounds. We are continuing to expand and diversify our Faculty Development Programme and activities, with both our own core faculty as speakers as well as invited external guests to share on their respective areas of expertise.

Last but not least, SingHealth Pediatrics Residency Program has achieved significant improvements in the annual Accreditation Council for Graduate Medical Education International (ACGME-I) Resident and Faculty surveys in the past 2 years. In 2015, SingHealth Pediatrics Residency Program was named the most improved program and ranked in the top 3 for best performing program for the first time since 2010. Furthermore, SingHealth Pediatrics Residency Program was rated the best performing program amongst large residency programs with more than 40 trainees in 2016. This was the culmination of the combined hard work and effort of everyone involved in resident education.

We look forward to the future and hope to continue to improve. We recently had our ACGME-I program site visit and reaccreditation in October 2016, and did ourselves proud. I would like to take this opportunity to thank the Division of Medicine and Paeds ACP for all their help and support in the past and moving forward into the future.

Dr Shahdadpuri Raveen Ishwardas

Program Director
SingHealth Pediatrics Residency Program
Senior Consultant
General Paediatrics & Adolescent Medicine Service
Department of Paediatrics, KKH



KEY FACTS AND FIGURES

RESIDENCY IN SINGHEALTH EXCELS (RiSE) AWARDS (2013-2016)



37
Senior Residents



Ranked Number **1**
in SingHealth Residency Program with more than 40 residents (AY15)



66
Junior Residents

Ranked Number **3**
and the most improved program in SingHealth Residency Program Overall Ranking (AY14)



FIRST CHOICE FOR PEDIATRICS RESIDENCY PROGRAMS - DUKE-NUS AND YLLSoM STUDENTS

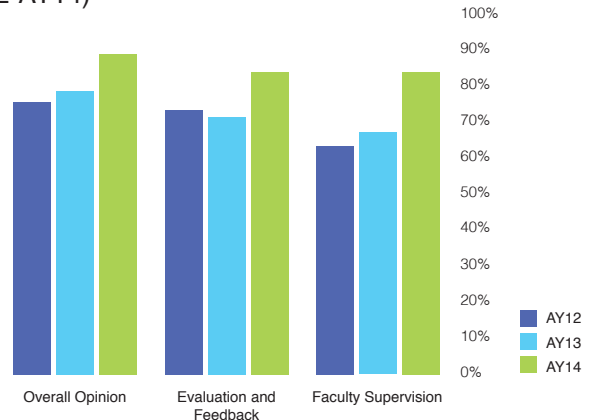


2015 - 89% ranks SingHealth as 1st choice

2014 - 71% ranks SingHealth as 1st choice

2013 - 67% ranks SingHealth as 1st choice

RESIDENT PERSPECTIVE OF THE PROGRAM (AY12-AY14)



FACULTY DEVELOPMENT

Paeds ACP works closely with Academic Medicine Education Institution (AM•EI) and SingHealth Duke-NUS Joint Office of Academic Medicine (JOAM) to enhance the capabilities of each and every educator – to develop our healthcare educators so that they can bring out the best in their students and contribute towards better patient care.

To support the educational activities of the Academic Clinical Programmes, courses and funding were provided to develop, mentor and retain the best educators for our students, residents, other trainees and faculty.

AM•EI FELLOWS PROGRAMME

2013	Assoc Prof Loh Tsee Foong
2014	Assoc Prof Thoon Koh Cheng Dr Mok Yee Hui Dr Simon Robert Ling
2015	Dr Sashikumar Ganapathy Dr Veena Rajkumar Dr Cristelle Chow Chu-Tian

AM•EI EDUCATION LEADERSHIP PROGRAMME (AMLEAD)

2015	Dr Gan Bin Kee
2016/17	Assoc Prof Thoon Koh Cheng



AM•EI Members = 339
AM•EI training hours = 556 hours
AM•EI Fellows Programme = 7
AM•EI Education Leadership Programme (AMLead) = 2
Harvard Macy Program - Program for Educators in Healthcare Profession = 3
Harvard Macy Program - A Systems Approach to Assessment in Health Professions Education = 2
Harvard Macy Program - A Systems Approach to Assessment in Health Science Education = 1
Health Professions Educators Essentials (HaPEE) = 2
AM-ETHOS Academic Mentor Development Fellowship = 1
AM-ETHOS Medical Simulation and Inter-Professional Learning Project Grants = 1
AM-ETHOS Academic Administrator Fellowship = 1
SingHealth Medical Student Talent Development Award (SMSTDA) = 3

EDUCATION ACCOLADES

NATIONAL OUTSTANDING CLINICIAN MENTOR AWARD



Prof Chay Oh Moh was conferred 2014 National Outstanding Clinician Mentor Award for her distinguished and outstanding contributions as a mentor, teacher, researcher and clinician in the development of paediatric medicine in Singapore.

For more than 20 years, Prof Chay has groomed generations of medical students and residents in the areas of paediatrics and paediatric respiratory medicine. A mentor who believes in role modelling and walking the talk, Prof Chay journeys with her mentees and provides an ever listening ear. She inspires them to follow their passion and persevere towards their desired goals.

“I have no doubt that our faculty is committed to educate the next generation of Doctors and Paediatricians. Although Paeds ACP has a challenge of hosting three medical schools with different developmental needs for their students, we are working collaboratively with each school to ensure the best learning experience for their medical students. There were several changes made in workflow through the year to be more learner-centric. This is testimony to the mandate of the ACP to enhance the clinical learning environment to meet the needs of the learners for a conducive learning environment,” said Prof Chay.

Prof Chay Oh Moh

Campus Director
Education Office, KKH
Senior Consultant
Respiratory Medicine Service
Department of Paediatrics, KKH



AWARDS	AWARD WINNERS
National Medical Excellence Award 2014 - National Outstanding Clinician Mentor Award	1
SingHealth Excellence Awards - Distinguished Mentor Award	2
SingHealth People's Choice Awards - Senior Mentor Award	1
SingHealth Best Junior Doctors Award - Best Medical Officer Award	1
SingHealth Best Junior Doctors Award - Best Registrar Award	1
AM.EI Golden Apple Award for Programme Innovation (Medical)	1
2015 KK People Developer (KKPD) Outstanding Clinical Teacher Award	1
KKH Formal Education Sponsorship (Doctors)	3
YLLSoM Dean's Award for Teaching Excellence	16
YLLSoM Teaching Awards - Junior Doctor Teaching Award	3
YLLSoM Role Model Commendation	2
YLLSoM Special Recognition Award	10
Outstanding Performance for Intermediate/In-Training Examination	5
Nestle Book Prize for Performance in MMED Exam May/Oct 2013	2

NEW INITIATIVES

HEADSS Assessment

Effective physician communication is an essential skill that has been linked to better patient outcomes, improved adherence to care plans, and improved patient safety.

Due to the risk taking behaviour of adolescents and potential short-term and long-term consequences of health on these behaviours, psychosocial risk assessment, Home, Education and employment, Activities, Drugs, Sexuality, Suicide and Depression, and Safety (HEADSS) assessment, for adolescent patients is an essential skill for all physicians who care for them. Research has shown that medical students, trainees, and practicing physicians alike are uncomfortable and lack skill in discussing these difficult topics with adolescents.

We proposed a project incorporating the use of adolescents as standardised patients to improve current instructional methods for adolescent psychosocial risk assessment in medical students. This project is funded by Duke-NUS. Working with adolescents provides medical students with a unique opportunity to develop these skills in a facilitated simulated scenario.

The programme incorporates a series of simulated role play scenarios to provide medical students an opportunity to practice addressing common communication challenges when working with adolescents and receive direct feedback both from the adolescent standardised patient as well as trained facilitators. These scenarios would address common communication difficulties with adolescents including: negotiating for time with the adolescent alone, discussing confidentiality, and conducting a psychosocial risk assessment using the HEADSS framework.



Dr Kumudhini Rajasegaran
Programme Advisor
Head and Senior Consultant,
General Paediatrics and
Adolescent Medicine Service
Department of Paediatrics, KKH



Dr Courtney Davis
Principal Investigator
Staff Physician
Division of Medicine, KKH

Singapore Neonatal Resuscitation Course

The Singapore Neonatal Resuscitation Course (SNRC) is an educational programme organised under the purview of the Paeds ACP. The course curriculum was designed with the vision of having a qualified individual present at every delivery and a qualified team for every resuscitation or anticipated resuscitation.



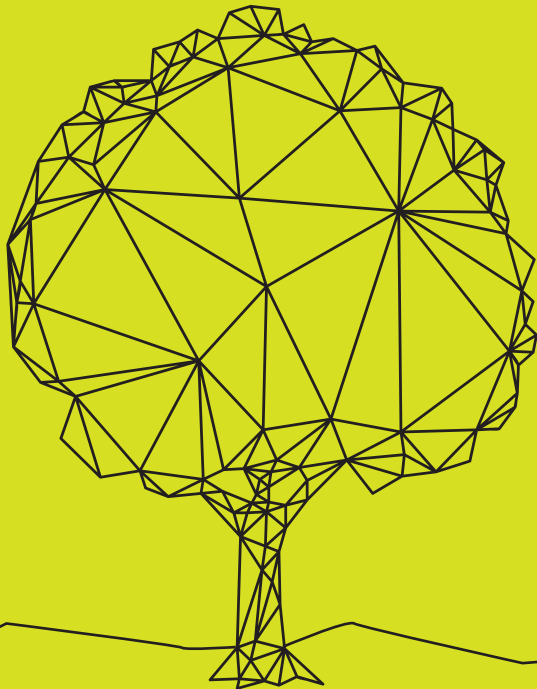
The simulation centres at the Academia on SGH campus and KKH were accredited by the National Resuscitation Council, Singapore to conduct simulation-based training in neonatal resuscitation following a common SNRC curriculum in April 2010 and 2014 respectively. The course programme was awarded an education grant of \$96,300 from the SingHealth and Duke-NUS Joint Office of Academic Medicine with which training equipment and instructors' training skills were enhanced. Thirty-seven course instructors completed a 1-day professional development programme in March 2015 to standardise teaching and to upgrade training skills. To date, the programme has trained 1,126 medical, nursing and allied health staff involved in the care of newborns.



Assoc Prof Yeo Cheo Lian
Programme Director
Senior Consultant
Department of Neonatal and Developmental Medicine,
SGH

EDUCATION PLANS AND PRIORITIES

- Optimise resource allocation for Duke-NUS Medical School, Yong Loo Lin School of Medicine, and Lee Kong Chian School of Medicine
- Work towards Three medical schools, One hospital
- Engage education champions
- Enhance faculty development programmes



RESEARCH



Paeds ACP has moved to the forefront of research in Singapore and the region in a short timespan, with vigorous efforts by all in the ACP and with the help of the steady guiding hands of Assoc Prof Ng Kee Chong and Assoc Prof Law Hai Yang.

As we move forward, our focus must be on driving clinically relevant research. We must build on the clinical and research strengths of the departments that make up the Paeds ACP. We must work synergistically with our clinician scientists to positively impact children's health in partnership with fellow clinician scientists and clinicians in Singapore and beyond, and our administrators and support staff to smoothen the research journey. Together we can achieve the long-term aim of adding value to the health of children and the healthcare system of Singapore.

Assoc Prof Derrick Chan

Academic Vice Chair, Research, Paeds ACP
Head & Senior Consultant
Neurology Service
Department of Paediatrics, KKH



Paeds ACP Research has seen research interest and outcome growing since its inception five years ago.

It has been an especially exciting 2013 with Prof Salvatore Albani joining us as our strategic clinician scientist, and the launching of the first Paediatric Young Researcher Award which has since been an annual grant call to support small projects or pilot studies.

Funding was secured from various sources, including SingHealth Foundation grant, Khoo Pilot award, Health Services Research competitive research grant for our researchers, and the most prestigious one was the STaR Award received by Prof Salvatore Albani.

The Tan Cheng Lim Research and Education fund is an additional resource to boost research activities. Apart from the Annual Research and Education Day which is a new platform to meet and share research findings by residents, doctors, nurses and allied health colleagues, a monthly research round enables regular discussion of ideas among all.

Assoc Prof Law Hai Yang

Senior Director, Research, Paeds ACP
Chief Scientific Officer
DNA Diagnostic & Research Laboratory
Genetics Service
Department of Paediatrics, KKH

RESEARCH HIGHLIGHT



SingHealth Translational Immunology and Inflammation Centre (STIIC)

The SingHealth Translational Immunology and Inflammation Centre (STIIC) was established to drive cutting edge, patient-centred research on unmet clinical needs. STIIC employs a cogent Immunomics platform to integrate various

high throughput technologies into one flow that can be specifically adapted for standardised, reliable use in clinical specimens. The aim is to design and conduct ad hoc controlled studies to collect high quality clinical data and samples. These studies will contribute to stratifying patient populations based on clinical and mechanistic characteristics, identify novel targets and develop and validate novel leads.

Paediatric Research Collaborations:

There is a specific research interest in studying paediatric diseases with a commitment to the welfare of children. Utilising tools, expertise and close collaborations with KKH and international entities (E.g. Cincinnati Children's Hospital Medical Center, University Medical Center (UMC) Utrecht, Bambino Gesù, Rome, Cleveland Clinic etc.) who share this vision, STIIC aims to develop a vibrant paediatric translational community. Studies aimed towards this include funded and pilot projects:

In the STaR study (NMRC-funded) we are studying immune cells from children with **Juvenile Idiopathic Arthritis (JIA)** to understand responsiveness to therapy and attributes of treatment failure. This project is underway and ahead of its deliverables. A cohort of patients are being recruited at KKH (Assoc Prof Thaschawee Arkachaisri) towards this, to be studied using the Immunomics workflow.

One of the aims of the Ministry of Health Industry Alignment Fund Category 2 (MOH IAF Cat2) (NMRC funded) is to develop a cytometry database of **healthy paediatric samples** on which several CyTOF panels that have been developed at STIIC will be used. These samples will be collected in collaboration with KKH (Assoc Prof Thaschawee Arkachaisri, Dr Angela Tan).

STIIC is also collecting samples from patients with **Kawasaki Disease** (Dr Jonathan Choo, Dr Tan Zhen Han) aimed at studying molecular and functional analysis.

A recently initiated project on **Paediatric Neuro-Immunology** with Assoc Prof Derrick Chan is aimed at studying immunological contribution to sterile neurological inflammatory conditions.

An industry project (Danone) that is supported by complementary funding by NMRC (MOH IAF Cat1) is aimed at identifying molecular features of **immune tolerance to cow's milk**. Children with suspected allergy to cow's milk (confirmation by positive IgE) will be recruited at KKH (Assoc Prof Anne Goh).

Another pilot project (initiated by Dr Yeo Joo Guan, KKH) is aimed at studying the regulatory role of B cells in **paediatric systemic lupus erythematosus (SLE)** by applying the immunomics work flow.

In another NMRC funded research project awarded to Assoc Prof Jerry Chan (KKH, Clinician Scientist - Individual Research Grant (CS-IRG)), STIIC is collaborating with them and A*STAR (Dr Florent Ginhoux, (SIgN) researcher) to study **Fetal Immune cell ontogeny**.

Training and education:

To foster researchers at various stages of their career and to nurture the next generation of clinical scientists and academic researchers, STIIC has trained eight post doctoral fellows, three Clinician Scientists, six academic research associates and six interns (from institutes around the island as well as internationally) since July 2013. Trainees currently at STIIC from KKH are: Dr Yeo Joo Guan and Dr Raymond Ong (current research intern).

STIIC is also involved in international networking initiatives supported by Paeds ACP, Duke NUS, AMRI and Office of Research: Understanding Childhood Arthritis Network - Asia (UCAN-A), Nature Science Cafe, Eureka and by hosting translational medicine seminars.

Prof Salvatore Albani

Director, SingHealth Translational Immunology and Inflammation Centre
Senior Consultant and Senior Clinician Scientist
Division of Medicine, KKH

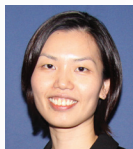
OUR RESEARCH CHAMPIONS



Translational Research resonates with our core mission of “Patients. At the heart of all we do”, as it enables us to translate bench-side research into better clinical tools and/or therapies to consistently and systematically improve patient care.

Dr Saumya Shekhar Jamuar

Consultant
Genetics Service
Department of Paediatrics, KKH

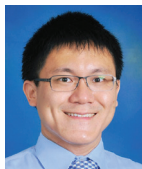


Support from the Paeds ACP and the hospital has enabled me to pursue my passion of improving care of patients with neuromuscular disorders by integrating cutting edge diagnostics and therapeutics in a multidisciplinary clinic setting.

Dr Wendy Liew Kein Meng

Consultant
Neurology Service
Department of Paediatrics, KKH

OUR RESEARCH CHAMPIONS



Translational research is what gives bench-top basic science research meaning.

It must be a deliberate process to ensure that the time and resources spent on research has value and applicability.

Dr Yeo Joo Guan
Associate Consultant
Division of Medicine, KKH



The application of discoveries made through basic science research is key to improving the clinical outcomes for our patients. With our local strength and expertise in bedside clinical care combined with increasing capabilities in basic bench research, there is tremendous potential for translational research in our academic medical centre.

Dr Yeo Kee Thai
Associate Consultant
Department of Neonatology, KKH



The greatest challenge remains in translating our research findings into clinically impactful change for our patients. Our relentless pursuit must be motivated by the hope of making a difference finally, to those who come to us for medical attention.

Dr Chong Shu-Ling
Staff Physician
Department of Emergency Medicine, KKH

KEY FACTS AND FIGURES

53

Academic Medicine
Research
Institution (AMRI)
members



3

Clinician Scientists
(National Level)



3

Clinician Scientists
(Cluster Level)



3

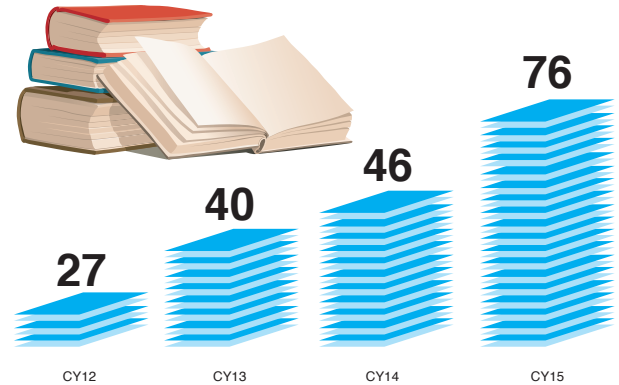
Nurturing Clinician
Scientist Awardees



11

AM-ETHOS
Medical Student
Research Fellowship

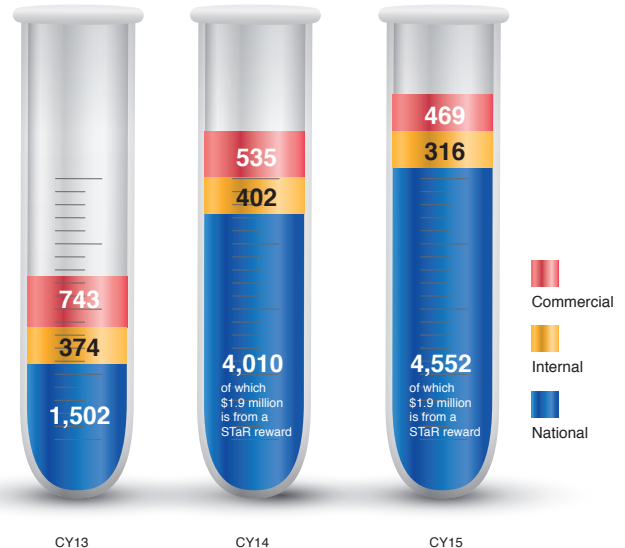
NUMBER OF ARTICLES PUBLISHED



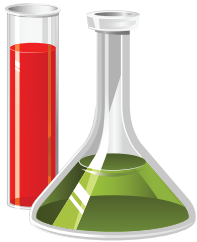
RESEARCH FUNDING

(in SGD '000)

*Multi-year funding is annualised

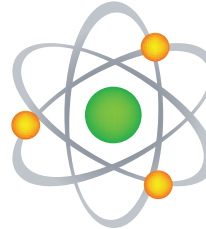


RESEARCH ACCOLADES (2013-2016)



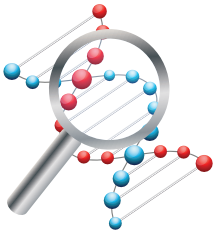
NATIONAL MEDICAL RESEARCH COUNCIL (NMRC)

- **Prof Salvatore Albani** - STaR Award
- **Dr Lek Ngee** - Transition Award
- **Dr Chong Shu-Ling** - Health Research Scholarship (MCI) & Research Training Fellowship
- **Dr Biju Thomas** - Clinician Scientist-Individual Research Grant, New Investigator Grant
- **Dr Saumya Shekha Jamuar** - Clinician Scientist-Individual Research Grant, New Investigator Grant
- **Dr Wendy Liew Kein Meng** - Clinician Scientist-Individual Research Grant, New Investigator Grant
- **Dr Yeo Joo Guan** - Clinician Scientist-Individual Research Grant, New Investigator Grant



AGENCY FOR SCIENCE, AND TECHNOLOGY (A*STAR)

- **Dr Saumya Shekha Jamuar** - BMRC-EDB Industry Alignment Fund (IAF)
- **Assoc Prof Derrick Chan** - Bioengineering Programme Grant



OTHERS

4 SingHealth
Foundation
Research
Grants

1 SingHealth
Foundation -
NHIC Joint
MedTech Grant

2 Khoo Pilot
Grants

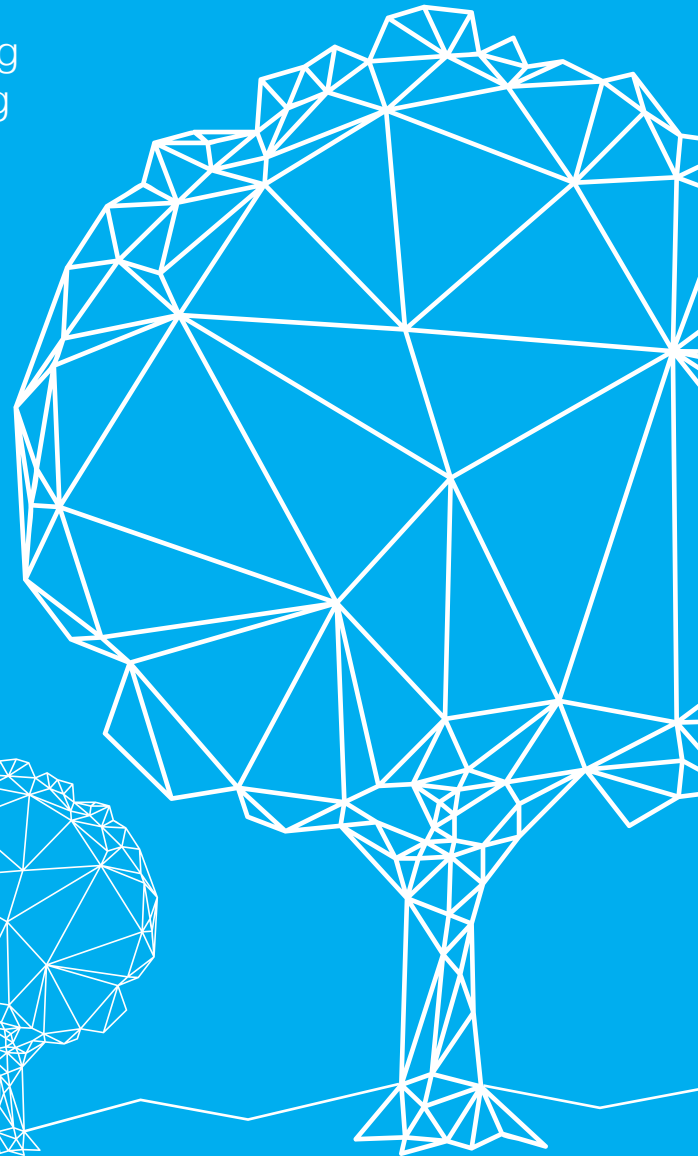
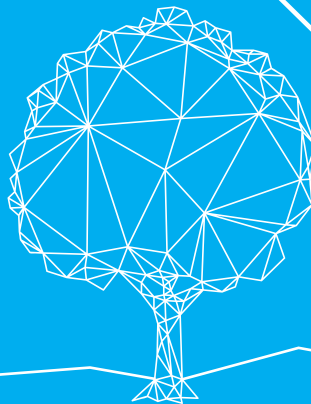
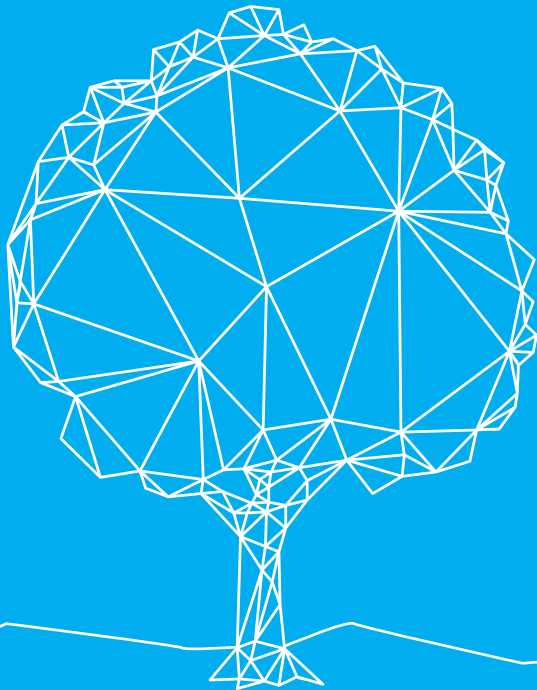
3 SingHealth
Duke-NUS
JOAM ACP
Clinical
Innovation
Support Grants

15 Paeds
ACP Young
Researcher Pilot
Grants

8 Tan Cheng
Lim Research
and Education
Fund Grants

RESEARCH PLANS AND PRIORITIES

- Sustained national-level grant funding
- Mentorship and guidance of budding clinician-scientists
- Intrinsic ACP research support
- Development of next generation of clinician-researchers
- Develop and enhance strategic programmes
- Strengthen collaborations



COLLABORATING WITH NURSES AND ALLIED HEALTH PROFESSIONALS (AHP)

Mr Satyaki Sengupta, Deputy Director, Division of Allied Health Specialties, KKH, Ms Irene Quay, Assistant Director, Allied Health Office, Head, Pharmacy Department, Division of Allied Health Specialties, KKH and Ms Lee Siew Kum, Assistant Director, Division of Nursing, KKH, were appointed AHP and Nursing leads respectively in Paediatrics ACP, since July 2015. They are involved in Paediatrics ACP council meetings to discuss collaboration opportunities in the areas of clinical, research and education.

Allied Health

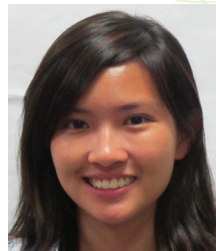
KKH clinical pharmacists are involved in the teaching of residents in the SingHealth Pediatrics Residency Program and medical students under the Duke-NUS Paediatric clerkship programme. Two of the Pharmacy Doctorate (Pharm D) pharmacists held teaching appointments as Associate in Education with Duke-NUS Medical School and Clinical Tutor under SingHealth Pediatrics Residency Program.

Senior Oncology Pharmacist, Ms Foo Koon Mian, in collaboration with our oncology medical colleagues and Duke-NUS researcher, was awarded the FY14 ACP research grant of \$25,000. Her study looked into Pharmacokinetic studies of Aprepitant in Paediatric and Adolescent cancer patients.

Principal Occupational Therapist, Ms Soh Siok Khoon, in collaboration with our paediatric medical colleagues and occupational therapists from the Rehabilitation Department, Dr May Lim (Singapore Institute of Technology) and Prof Kenneth Poon (National Institute of Education), was awarded \$34,295 from the Tan Cheng Lim Research and Education Fund Grant in March 2015. Her study looked into the "Effectiveness of a variable air pressure vest in the regulation of attention levels in children with attention difficulties".



Ms Foo Koon Mian
Principal Clinical Pharmacist
Oncology Pharmacy
Division of Allied Health Specialties, KKH



Ms Soh Siok Khoon
Head, Occupational Therapy Service
Principal Occupational Therapist
Rehabilitation Centre
Division of Allied Health Specialties, KKH

Nursing



Advanced Practice Nurses

Currently there are 51 Paediatric Resident Nurses (Medical, Surgical, Oncology and Neonatal disciplines) in the various Paediatric wards.

Nurses are also actively involved as trainers in national, cluster and hospital-wide training for all healthcare professionals such as the Singapore Neonatal Resuscitation Course, KKH Paediatric Advanced Life Support Training and more specifically, Simulation Training modules in the Paediatric ACPs for paediatric residents. The number of nursing-led research studies with physicians as co-investigators have been modest but consistent since 2014 and these include:

2014 Determining the bacterial colonization of the anesthesia breathing circuit: A quality control initiative on the heat and moisture exchange bacterial filter (HME-BF)
PI: Qi Xiao Yan, Major OT
Nursing Co-Is: Chia Yen Yen; Evelyn Lim; Jaslin Nah Siew Noy; and Wu Dan
Physician Co-Is: Drs Agnes Ng Suah Bwee; Kuenza P. Wangmo; and Nancy Tee

A study of childhood measles cases in a tertiary children's hospital, SSN Li Ling, Infection Control
PI: Li Ling, Infection Control
Nursing Co-Is: Lim Siok Hong; Tan Chin Bee; Lim Wan Sin; and Low Jia Meng
Physicians Co-Is: Drs Natalie Tan Woon Hui; Chong Chia Yin; Thoon Koh Cheng; Nancy Tee Wen Sim

2015 The safety of continuous enteral nutrition over 12 hours for paediatric patients
PI: Chia Yen Yen, Division of Nursing
Nursing Co-Is: Evelyn Lim; Chua Ying Jie; and Tan Hui Luan
Physician Co-I: Dr Nancy Tee Wen Sim

An exploratory survey on current hospitalization experiences and future ideas on an adolescent (teenage) only ward
PI: Lee Kim Nai
Nursing Co-Is: Tan Hui Luan; Chia Yen Yen; Evelyn Lim; Aslinna Abdul Jabbar; and Lau Gek Muay
Physician Co-Is: Drs Margeret Kelly Siobhan; and Rajasegaran Kumudhini

2016 Caring for a child with Nephrotic Syndrome: Caregivers' health seeking behaviours, meeting the care and support needs of the child
PI - SSN Wang Fan (Nursing Research Fellow)
Co-I - Dr Ng Yong Hong
Co-I - Dr Chia Yen Yen

Effectiveness of 'Journey not alone' Mobile-health application educational programme on the outcomes of Paediatric oncology patients: A feasibility randomised controlled trial (JUMP STUDY)
PI - Dr Soh Shui Yen
Co-I - Dr Chia Yen Yen
Co-I - SSN Lim Yan Yin (Nursing Research Fellow)
In collaboration with NUS Academics

2016 The safety and feasibility of High Flow Nasal Cannula (HFNC) in extubated pre-term infants: An observational Study
PI - SSN Wu Jingyi (Nursing Research Fellow)
Co-I - NC Charlene Wimala
Co-I - ADN Annie Goh
In collaboration with the
• NICU Physicians – Prof Victor Samuel Rajadurai, Dr Manual Joseph Gomez, Dr Yeo Kee Thai
• Respiratory Therapist – Mr Rudimar Fernandez, Mr Omar Rico
• Duke NUS Academic Dr John C Allen Jr.

Completed research studies and published articles involving collaborative work of multi-disciplinary team in KKH with other Institutions:

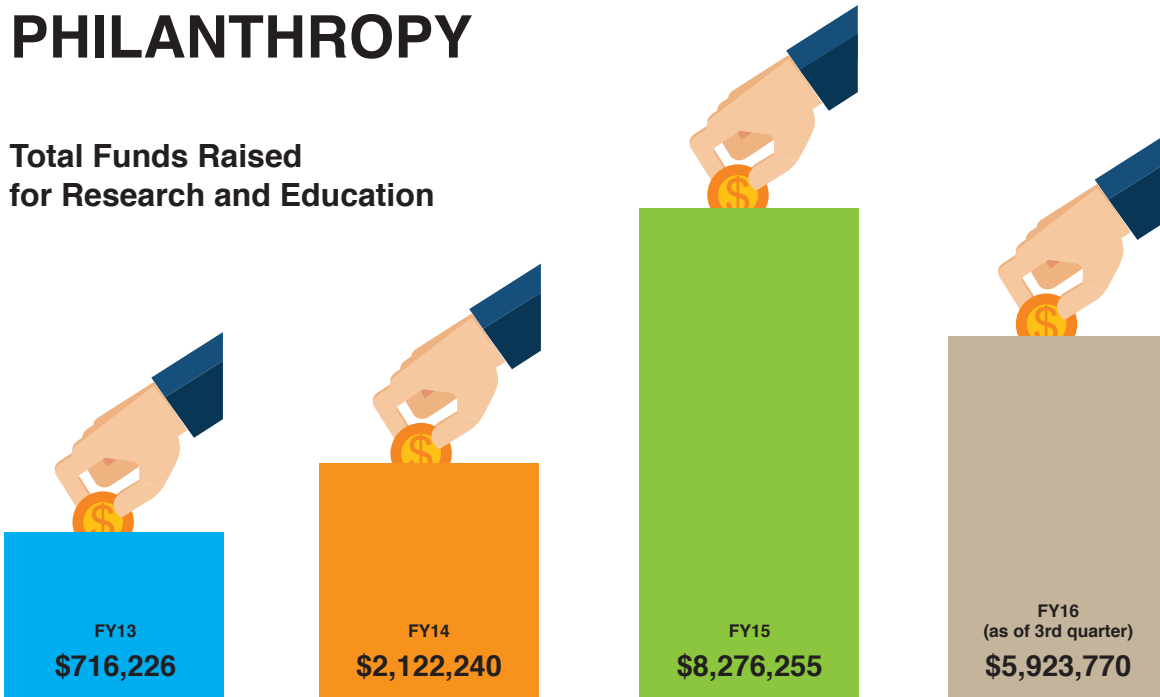
2016 "Understanding decisions leading to non-urgent visits to paediatric emergency department: caregivers' perspectives", Published in Singapore Medical Journal 2016
Authors: Phek Hui Jade Kua, MRCS, FAMS, Li Wu, PhD, E-Lin Tessa Ong, Zi Ying Lim, BN, AdvDipNR, Jimmian Luther Yiew, BSc, Xing Hui Michelle Thia, BN, AdvDipNR, Sharon Cohan Sung, PhD

"Pre-operative Verification, Site Marking and Time Out - Spreading Patient Safety Culture from Major Operating Theatre to Day Surgery" Published in World Hospitals and Health Services – Service Delivery in Asia, Vol. 52 No. 2: 23-26
Authors: Jacqueline Cristy Diaz Dayuta, Li Li Chee, Lay Teng Ong, Nguk Lan Pang, Soon Noi Chia, Rosnah Bte Ismail, Henry Kun Kiang Tan, Joseph Manuel Gomez and Kok Hian Tan

"Using online and scenario-based learning to improve nurse-patient interaction and enhance patient experience" Published in World Hospitals and Health Services – Service Delivery in Asia, Vol. 52 No. 2: 31-37
Authors: ADN Ms Wong Kin Ling (KKH) and Daphne Chan Mei Ling (SingHealth Academy)

PHILANTHROPY

Total Funds Raised for Research and Education



Total Funds Raised for Clinical Service



PHILANTHROPY

VIVA-KKH Paediatric Brain and Solid Tumour Programme

To advance the care for childhood brain and solid tumours, KKH and VIVA agreed to establish the VIVA-KKH Paediatric Brain and Solid Tumour Programme. Spearheaded by KKH, this clinical and research programme will be a phased three-year pilot project and will leverage on KKH's strengths and networks in treating paediatric brain and solid tumours.

Regarding the partnership, VIVA's Chair Mrs Jennifer Yeo said, "Danny Thomas, founder of St. Jude Children's Research Hospital said that 'No child should die in the dawn of life'. We hope that through the establishment of this programme, clinical and research outcomes will enable us to save the lives of more children with brain and solid tumours."



Signing of the VIVA-KKH Paediatric Brain and Solid Tumour Programme MOU, March 2015

Lee Kong Chian Paediatric Neurology Fellowship

This Fellowship will enable an exchange of learning between local Paediatric Neurology trainee doctors and trainee doctors from the region to take place. These trainee doctors from underserved parts of Southeast Asia will share their medical experience while undergoing training in Singapore for one year; and then return to help sick children suffering from serious neurologic conditions in their own countries. The Fellowship will increase networking opportunities and build networks within the region to foster closer cooperation in clinical, education and research domains.

PHILANTHROPY

Tan Cheng Lim-CCF Professorship in Paediatric Oncology

This endowed Professorship, in honour of Prof Tan Cheng Lim, will be awarded to an outstanding individual who has demonstrated extraordinary achievements in advancing medical science with positive outcomes in healthcare delivery and a keen interest in advancing research and education in paediatric oncology. The appointment as chair of this Professorship in Paediatric Oncology will be a role model for Asia's next generation of doctors, pursuing advances in clinical research primarily in paediatric medicine, paediatric oncology as well as funding paediatric oncology clinical education, while mentoring medical students and serving paediatric patients in the community.

"CCF is a champion for children suffering from cancers and is committed to working symbiotically with its partners in contributing to paediatric oncology research and education. This partnership will enhance the medical well-being of our children as they stand to benefit from the clinical research aimed at improving diagnosis, treatment and cure of childhood cancer," said Mr Ho Cheng Huat, CCF Chairperson.



Tan Cheng Lim Research and Education Fund

The fund was established in honour of Prof Tan Cheng Lim for his dedication towards advancing paediatric care in Singapore. It aims to pioneer advances in paediatric medicine by creating patient-centred programmes, prepare tomorrow's paediatric healthcare leaders through support of scholarly activities and to promote innovative research among clinician-researchers leading to new multi-disciplinary cures.



PHILANTHROPY

Philanthropy Funding for Clinical Initiatives

Temasek Foundation Cares continued their partnership with KK Women's and Children's Hospital (KKH) to establish various programmes such as the "Stay Prepared - Trauma Network for Children" and "Supporting Autism through Family Empowerment" to equip and empower families in our community to better care for children who are vulnerable and suffering.



Trauma Learning Network meeting with community therapists

The Lien Foundation has generously supported KKH in its mission to provide excellent, holistic and compassionate care for children. The latest programme involves a tri-partite collaboration between Lien Foundation, KKH Department of Child Development and Thye Hua Kwan Moral Charities Ltd, in collaboration with the Early Childhood Technical Assistance (ECTA) Centre in USA. The partnership employs the use of the Early Childhood Holistic Outcome (ECHO) framework from the USA to enhance Early Intervention Programme for Infants and Children (EIPIC).

OUR PIONEER MEDICAL RESEARCH & ADVANCES

- 1 Performed Singapore's first successful stem cell transplant using unrelated cord blood from the Singapore Cord Blood Bank.
- 2 Established the first Extra-corporeal Membrane Oxygenation (ECMO) life support programme for critically ill newborns and children in Singapore.
- 3 Investigated Kernicterus (a form of brain damage), which led to the near-elimination of the condition and universal screening for Glucose-6-Phosphate Dehydrogenase (G6PD) enzyme deficiency for all newborns in Singapore.
- 4 Established the National Thalassemia Registry and programme for Singapore – to screen, counsel and manage children and families with the inherited blood disorder.
- 5 Pioneered the first molecular test for neuroblastoma (a rare nerve cancer that occurs in children) in Asia.

HOW YOUR GIFT CAN CHANGE MEDICAL SCIENCE

When you give to the Paediatrics Academic Clinical Programme, your gift helps to develop better methods to predict, prevent, and treat disease, and prepare the next generation to lead in research that improves medical care.

An estimated 20% of children in Singapore suffer from bronchial asthma. Professor Chay Oh Moh and her team established the Singapore National Asthma Programme (SNAP) to improve treatment and quality of life for children with frequent and severe asthma attacks.

Let us help you plan a meaningful gift

We are here to answer all your questions. Call, email, or send us a fax.

Development Department
Email: development@khh.com.sg
Direct: +65 6394 8180
Fax: +65 6394 8268

**KK Women's and Children's
Hospital**
100 Bukit Timah Road
Singapore 229899

MAKING A GIFT

Contribution form

My gift is in support of the Paediatrics Academic Clinical Programme (ACP) for Research and Education Programmes.

Name of Donor: _____

Address: _____

Date of birth: _____ Contact number: _____

Email: _____

I am

- An individual donor (NRIC/FIN number: _____)
(required for Singapore residents, for auto-inclusion of donations in IRAS assessment)
- A corporate donor (UEN: _____)
(required for auto-inclusion of tax deduction in your corporate tax return)

My gift

- A monthly gift of S\$ _____ until I decide to discontinue.
 for _____ months.
- A one-time gift of S\$ _____

Payment method

- I enclosed a cheque (No.: _____)
(please make the cheque payable to "NUS (Duke-NUS)" and pen "Paeds ACP" on the back of the cheque along with your contact details)
- Credit card type: Visa MasterCard American Express
Card number: _____
Expiry date: _____ (MM/YY)
- I do **not** wish to be identified as the donor of this gift in NUS / Duke-NUS / SingHealth publicity materials.
- I do **not** wish to receive emails on news and updates from NUS / Duke-NUS / SingHealth.
- I do **not** wish to receive mails on news and updates from NUS / Duke-NUS / SingHealth.

I / We agree that our gift is subject to NUS's Statutes and Regulations and to its Standard Terms and Conditions for gifts (as may be amended from time to time by the University) updated for compliance with the Personal Data Protection Act 2012 (a copy can be found at <https://www.duke-nus.edu.sg/giving>).

Signature: _____ Date: _____

TAX DEDUCTION

Singapore tax-resident individuals and corporations enjoy a tax deduction of 2.5 times the value of their gift in their tax assessment. The Inland Revenue Authority of Singapore (IRAS) allows you to carry forward any unused deductions for up to five years.

**BUSINESS REPLY SERVICE
PERMIT NO. 02315**



SingHealth Duke-NUS Paediatrics Academic Clinical Programme

c/o Development Department
KK Women's and Children's Hospital
100 Bukit Timah Road
Singapore 229899

HELP US **CHANGE** CHILDREN'S LIVES



Research helps us change the lives of sick children and give them a healthy future. You can help to:

- Translate medical breakthroughs into cures
- Fund programmes to improve care

SPECIALISTS LISTING

■ PAEDS ACP KEY APPOINTMENT HOLDERS

- **Academic Chair**
Assoc Prof Ng Kee Chong
- **Academic Deputy Chair**
Prof Ho Lai Yun
- **Academic Vice Chair, Clinical**
Dr Chan Yoke Hwee
- **Academic Vice Chair, Education**
Prof Phua Kong Boo
- **Academic Vice Chair, Research**
Assoc Prof Derrick Chan Wei Shih
- **Deputy Academic Vice Chair, Education**
Assoc Prof Loh Tsee Foong
- **Senior Director, Research**
Assoc Prof Law Hai Yang
- **Director, Clinical Quality & Patient Safety**
Assoc Prof Chong Chia Yin

■ DIVISION OF MEDICINE

- **Senior Consultant**
Prof Salvatore Albani
Assoc Prof Winnie Goh Hwee Suat
- **Associate Consultant**
Dr Yeo Joo Guan

■ DEPARTMENT OF PAEDIATRICS

- **Head & Senior Consultant**
Dr Ng Yong Hong
- **Deputy Head & Senior Consultant**
Dr Teoh Oon Hoe
Dr Oh Jean Yin

ALLERGY SERVICE

- **Head & Senior Consultant**
Assoc Prof Anne Goh Eng Neo

- **Consultant**
Dr Loh Wenyin
- **Associate Consultant**
Dr Chong Kok Wee
Dr Goh Si Hui

ENDOCRINOLOGY SERVICE

- **Head & Senior Consultant**
Assoc Prof Fabian Yap Kok Peng
- **Senior Consultant**
Dr Lek Ngee
- **Consultant**
Dr Rashida F Vasanwala

GASTROENTEROLOGY SERVICE

- **Head & Senior Consultant**
Dr Christina Ong
- **Emeritus Consultant**
Prof Phua Kong Boo
- **Consultant**
Dr Veena Logarajah
Dr Chiou Fang Kuan

GENERAL PAEDIATRICS & ADOLESCENT MEDICINE

- **Head & Senior Consultant**
Dr Kumudhini Rajasegaran
- **Senior Consultant**
Dr Oh Jean Yin
Dr Raveen Shahdadhuri
Dr Barathi Rajendra
Dr Nandhakumar Nagarajan
- **Consultant**
Dr Yong Yin Peng
Dr Frances Chia Mei Ling
Dr Gan Bin Kee
Dr Rachana Koura
Dr Vinay Kumar Sahu
Dr Carolin Joseph Jeyanthi

- Dr Chong Jin Ho
- Dr Elaine Chew Chu Shan
- Dr Veena Rajkumar
- Dr Siew Jia Xuan
- Dr Sharon Wong Mun Yee
- Dr Alison Snodgrass Marion
- Dr Cristelle Chow Chu-Tian

• Associate Consultant

- Dr Lim Xue Yan
- Dr Yang Jinghui
- Dr Chin Xinyi
- Dr Dawn Lee Meijuan
- Dr Joel Chan Meng Fai
- Dr Jeanette Tan Keng Wein
- Dr Khoo Zi Xean
- Dr Esther Leow Hui Min
- Dr Irene Teo Ai Ngee

GENETICS SERVICE

- **Head & Senior Consultant**
Assoc Prof Angeline Lai Hwei Meeng
- **Senior Consultant**
Prof Ivy Ng Swee Lian
Dr Tan Ee Shien
- **Consultant**
Dr Saumya Shekhar Jamuar
Dr Ting Teck Wah

INFECTIOUS DISEASE SERVICE

- **Head & Senior Consultant**
Assoc Prof Thoon Koh Cheng
- **Senior Consultant**
Assoc Prof Chong Chia Yin
- **Consultant**
Dr Natalie Tan Woon Hui
Dr Yung Chee Fu

SPECIALISTS LISTING

NEPHROLOGY SERVICE

- **Head & Senior Consultant**
Dr Ng Yong Hong
- **Senior Consultant**
Assoc Prof Chao Sing Ming
- **Consultant**
Dr Indra Ganesan
Dr Chong Siew Le

NEUROLOGY SERVICE

- **Head & Senior Consultant**
Assoc Prof Derrick Chan Wei Shih
- **Senior Consultant**
Dr Choong Chew Thye
Dr Terrence Thomas
- **Consultant**
Dr Lim Kim Whee
Dr Wendy Liew Kein Meng
Dr Simon Ling
Dr Ng Zhi Min
Dr Yeo Tong Hong
- **Associate Consultant**
Dr Jocelyn Lim Yi Xiu

RESPIRATORY MEDICINE SERVICE

- **Head & Senior Consultant**
Dr Teh Oon Hoe
- **Senior Consultant**
Prof Chay Oh Moh
Assoc Prof Anne Goh Eng Neo
Dr Biju Thomas
- **Consultant**
Dr Arun Kumar Pugalenthi
Dr Petrina Wong Poh Chen

■ DEPARTMENT OF PAEDIATRIC SUBSPECIALTIES

CARDIOLOGY SERVICE

- **Head & Senior Consultant**
Assoc Prof Tan Teng Hong
- **Emeritus Consultant**
Dr Cheng Heng Kock
- **Senior Consultant**
Dr Jonathan Choo Tze Liang
Dr Chen Ching Kit
- **Consultant**
Dr Sreekanth Raghavan

CHILDREN'S INTENSIVE CARE UNIT

- **Head & Senior Consultant**
Dr Chan Yoke Hwee
- **Senior Consultant**
Assoc Prof Loh Tsee Foong
Assoc Prof Janil Puthucheary
Dr Loh Lik Eng
Dr Lee Jan Hau
- **Consultant**
Dr Mok Yee Hui
- **Associate Consultant**
Dr Siti Nur Hanim Buang
Dr Anuradha P Menon

HAEMATOLOGY/ONCOLOGY SERVICE

- **Head & Senior Consultant**
Assoc Prof Chan Mei Yoke
- **Emeritus Consultant**
Prof Tan Cheng Lim
- **Senior Consultant**
Assoc Prof Tan Ah Moy
Dr Soh Shui Yen
Dr Joyce Lam Ching Mei

- **Consultant**
Dr Rajat Bhattacharyya
Dr Prasad Iyer
Dr Enrica Tan Ee Kar
- **Associate Consultant**
Dr Michaela Seng Su-fern

RHEUMATOLOGY & IMMUNOLOGY SERVICE

- **Head & Senior Consultant**
Assoc Prof Thaschawee Arkachaisri
- **Consultant**
Dr Justin Tan Hung Tiong

■ DEPARTMENT OF EMERGENCY MEDICINE

- **Head & Consultant**
Dr Lee Khai Pin
- **Deputy Head & Senior Consultant**
Dr Arif Tyebally
- **Senior Consultant**
Assoc Prof Ng Kee Chong
Dr Angelina Ang Su Yin
Dr Tham Lai Peng
Dr Gene Ong Yong-Kwang
- **Consultant**
Dr Peter Wong Choong Yi
Dr Jade Kua Phek Hui
Dr Sashikumar Ganapathy
Dr Zaw Lwin
- **Associate Consultant**
Dr Leo Deng Jin
Dr Teng Sung Shin

SPECIALISTS LISTING

■ DEPARTMENT OF NEONATOLOGY (KKH)

- **Head & Senior Consultant**
Dr Chua Mei Chien
- **Deputy Head & Senior Consultant**
Dr Khoo Poh Choo

NEONATAL INTENSIVE CARE UNIT

- **Head & Senior Consultant**
Dr Joseph Manuel Gomez

SPECIAL CARE AND PERIPHERAL WARDS NURSERY

- **Head & Senior Consultant**
Dr Chua Mei Chien

NEONATAL AMBULATORY SERVICES

- **Head & Senior Consultant**
Dr Khoo Poh Choo
- **Senior Consultant**
Prof Victor Samuel Rajadurai
Dr Quek Bin Huey
Dr Alvin Chang Shang Ming
Dr Suresh Chandran
Dr Thowfique Ibrahim
- **Consultant**
Dr Melissa Batilando
Dr Tan Pih Lin
Dr Abdul Haium Abdul Alim
Dr Agarwal Pooja Jayagobi
Dr Kong Juin Yee
Dr Amudha Jayanthi Anand
Dr Yip Wai Yan
Dr Nirmal Kavalloor Visruthan
Dr Odattil Geetha

- **Associate Consultant**
Dr Yeo Kee Thai
Dr Simrita Kaur Khurana

■ DEPARTMENT OF NEONATAL AND DEVELOPMENTAL MEDICINE (SGH)

- **Head & Senior Consultant**
Assoc Prof Daisy Chan Kwai Lin
- **Emeritus Consultant**
Prof Ho Lai Yun
- **Senior Consultant**
Assoc Prof Yeo Cheo Lian
Dr Selina Ho Kah Ying
Dr Varsha A Shah
Dr Poon Woei Bing
- **Consultant**
Dr Vijayendra Ranjan Baral
Dr Bharadwaj Srabani
Dr Arunachalam Sridhar
- **Associate Consultant**
Dr Alvin Ngeow Jia Hao

■ DEPARTMENT OF PSYCHOLOGICAL MEDICINE

- **Head & Senior Consultant**
Dr Helen Chen Yu

WOMEN'S MENTAL WELLNESS SERVICE

- **Head & Senior Consultant**
Dr Choo Chih Huei
- **Senior Consultant**
Dr Theresa Lee Mei Ying
- **Consultant**
Dr Chua Tze-Ern
Dr Sandy Julianty Umboh

CHILD & ADOLESCENT MENTAL WELLNESS SERVICE

- **Head & Senior Consultant**
Dr Ong Say How
- **Consultant**
Dr Vicknesan Jeyan Marimuthu

■ DEPARTMENT OF CHILD DEVELOPMENT

- **Head & Senior Consultant**
Assoc Prof Lourdes Mary Daniel
- **Senior Consultant**
Assoc Prof Lim Sok Bee
Dr Sylvia Choo Henn Tean
Dr Wong Chui Mae
- **Consultant**
Dr Yeleswarapu Sita Padmini
Dr Ellen Tay Ghim Hoon
Dr Sandra Sylvia Mascarenhas

■ FAMILY MEDICINE SERVICE

- **Head & Consultant**
Dr Ang Seng Bin
- **Senior Consultant**
Dr Rukshini Puvanendran
- **Associate Consultant**
Dr Jean-Jasmin Lee Mi Li

■ DERMATOLOGY SERVICE

- **Head & Consultant**
Dr Mark Koh Jean Aan
- **Consultant**
Dr Liew Hui Min

ADMIN CONTACTS

Name	Designation	Office	Email	Contact
Jaxii Yong Lee Kin	Deputy Director	ACP Office	Jaxii.Yong.LK@kkh.com.sg	6394 1119
Wilson Low Cong Jin	Manager, Research	ACP Office	Wilson.Low.CJ@kkh.com.sg	6394 1858
Winnie Tan Mei Ling	Senior Executive, Academic Office	ACP Office	winnie.tan.ml@kkh.com.sg	6394 8943
Dr Fu Sheng	Senior Executive, Research	ACP Office	Fu.Sheng@kkh.com.sg	6394 8402
Lim Ming Hui	Executive, Academic Office	ACP Office	Lim.Ming.Hui@kkh.com.sg	6394 3945
Carine Ng Bee Chin	Executive, Education	ACP Office	Carine.Ng.BC@kkh.com.sg	6394 8946
Doreen Lim Joo Lee	Executive, Education	ACP Office	Doreen.Lim.JL@kkh.com.sg	6394 8812
Teresa Teng Ling Ling	Associate Executive, Education	ACP Office	Teresa.Teng.LL@kkh.com.sg	6394 5021
Joyce Chun Lye Har	Deputy Director	AM Finance	Joyce.Chun.LH@kkh.com.sg	6394 2424
Katherine Xu Kai Lin	Senior Accountant	AM Finance	Katherine.Xu.KL@kkh.com.sg	6394 8770
Nicole Ong Xiu Han	Senior Executive	GME Office	Nicole.ong.x.h@singhealth.com.sg	6394 8484
Chua Siti Ayeshah Mohd Shafiq	Executive	GME Office	chua.siti.ayeshah.mohd.shafiq @singhealth.com.sg	6394 8403
Elizabeth Lee Kia Suang	Executive	GME Office	elizabeth.lee.k.s @singhealth.com.sg	6394 3989
Irene Santos Hernadez	Senior Associate Executive	GME Office	irene.santos.hernadez @singhealth.com.sg	6394 5080
Michelle Lew Li Ming	Associate Executive	GME Office	michelle.lew.l.m @singhealth.com.sg	6394 8732

SingHealth Duke-NUS
Paediatrics Academic Clinical Programme

c/o Level 3, Children's Tower
KK Women's and Children's Hospital
100 Bukit Timah Road
Singapore 229899

Information correct as at December 2016